

				2 ENGINE FLOOR PLAN			
				ADAM NUGENT ROSENBERGER, 10/21/2021			
						1/1 sheet	
A1	initial design	01/01/01	DD	DD			
loc	change	date	name	project	project		

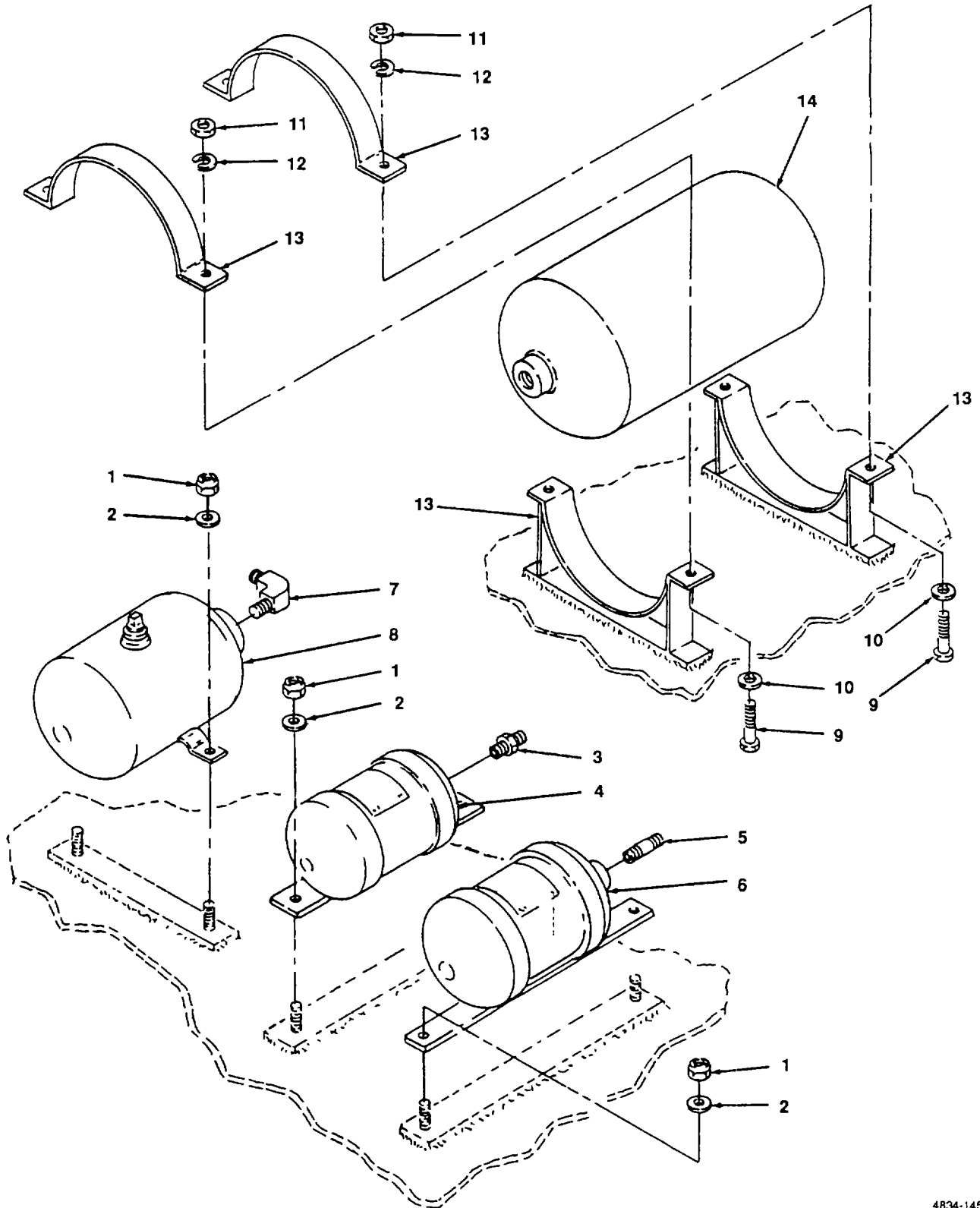
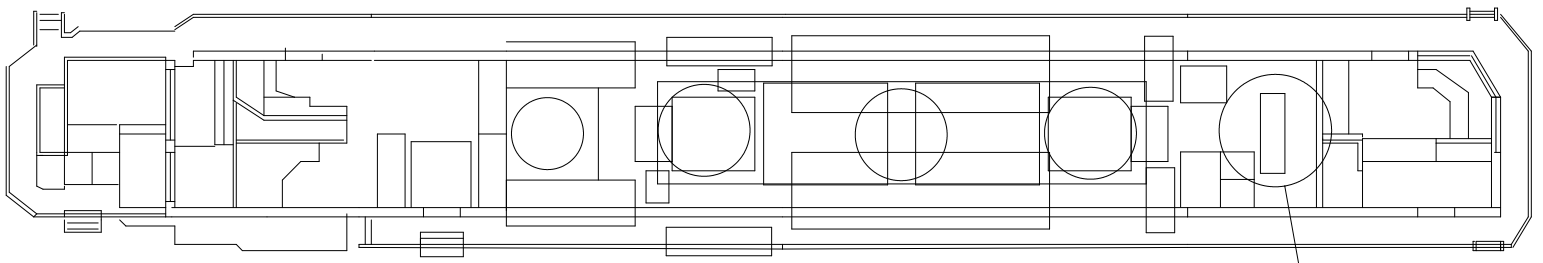
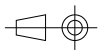


Figure 145. Reservoir Auxiliary.

(1) ITEM NO.	(2) FSCM	(3) PART NUMBER	(4) DESCRIPTION AND USABLE ON CODE	(5) QTY
			GROUP 19 AIR BRAKE SYSTEM GROUP	
			FIG. 145 RESERVOIRS, AUXILIARY	
1	96906	MS51922-33	NUT, LOCKING, 1/2 IN	6
2	96906	MS27183-18	WASHER, FLAT	6
3	96906	MS51500-BB	ADAPTER, PIPE TO TUBING, 3/8 TO 1/2 IN	1
4	82722	557676	RESERVOIR, VOLUME	1
5	96906	MS51873-49	NIPPLE, PIPE, CLOSE, 3/8	1
6	82722	559113	RESERVOIR	1
7	96906	MS51504-BB	ELBOW, PIPE TO TUBING, 3/8 X 1/2 IN.	1
8	82722	557085	RESERVOIR, EQUALIZING	1
9	96906	MS90725-36	SCREW, HEX-HEAD, 5/16 X 1 1/4 IN	4
10	96906	MS27183-12	WASHER, FLAT, 5/16	4
11	96906	MS51922-9	NUT, SELF-LOCKING	4
12	96906	MS35338-48	WASHER, LOCK	4
13	97403	13228E2149-86	BRACKETS	2
14	82722	518122	RESERVOIR, CONTROL AIR	1
			END OF FIGURE	



AIR COMPRESSOR

						AIR COMPRESSOR	
				date	name	ADAM NUGENT ROSENBERGER, 10/21/2021	
				desig. 07/01/04	dil		
				check fbd	dil		
				auth. fbd	dil		
A1	initial design	01/01/0	DDil			1/1 sheet	
loc	change	date	name	project	project		

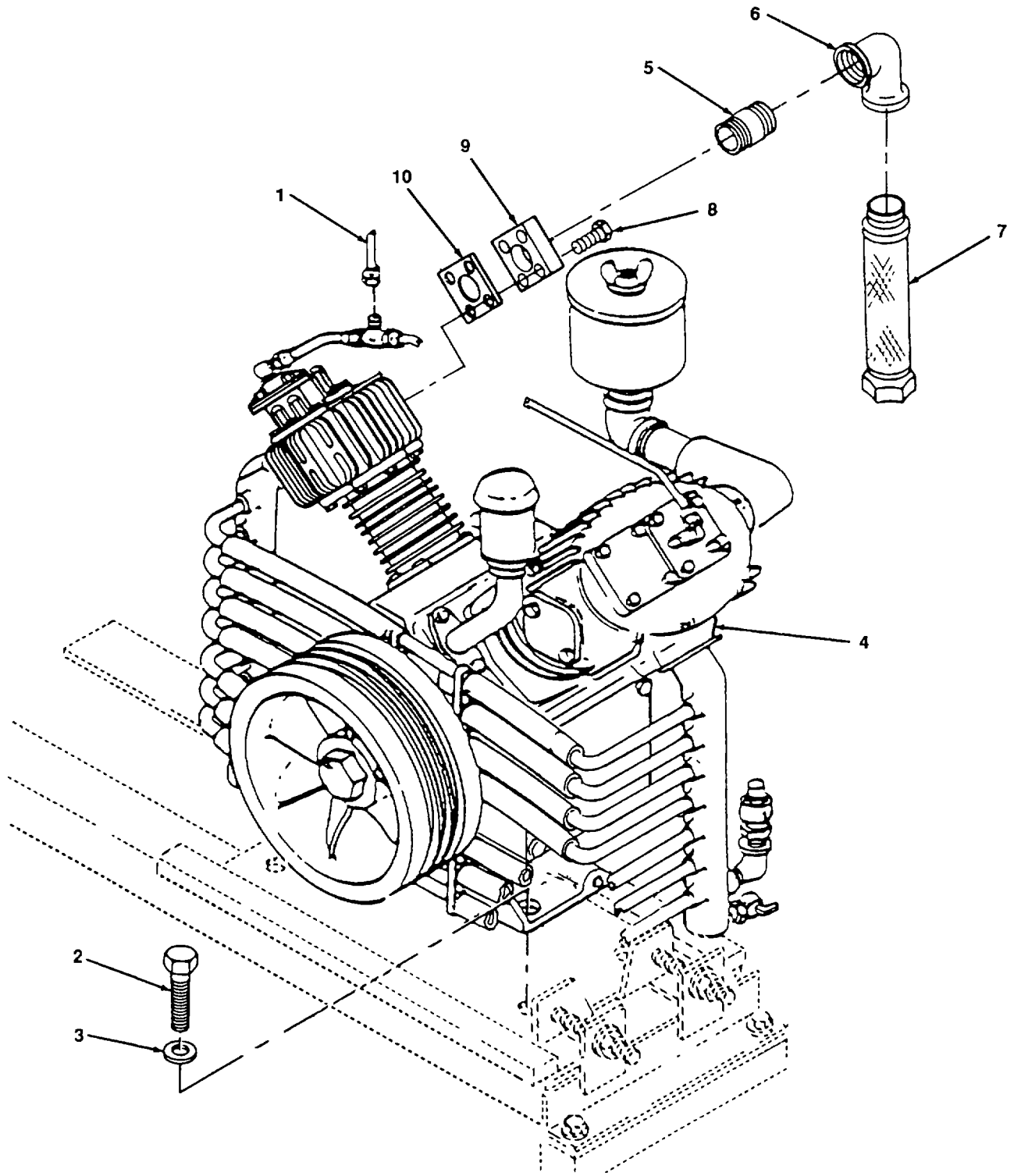
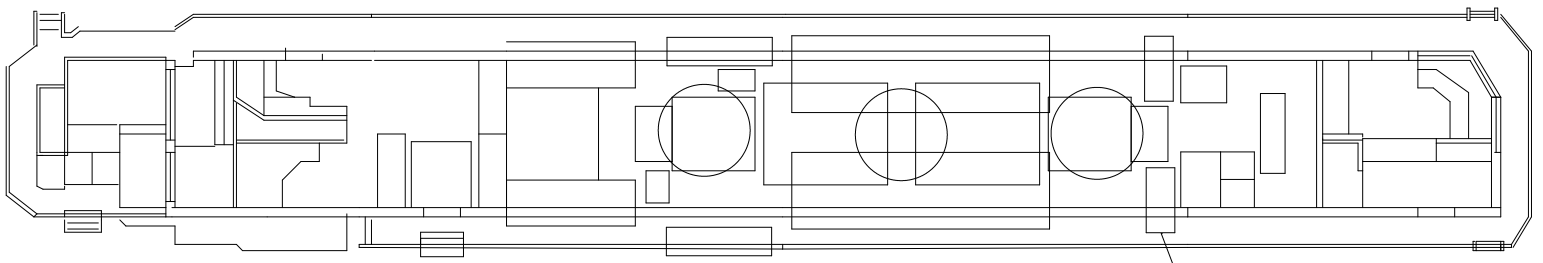


Figure 79. Air Compressor Assembly.

(1) ITEM NO.	(2) FSCM	(3) PART NUMBER	(4) DESCRIPTION AND USABLE ON CODE	(5) QTY
			GROUP 16 AIR COMPRESSOR	
			FIG. 79 AIR COMPRESSOR ASSEMBLY	
1	96906		FITTING, UNLOADER AIR LINE	2
2	96906	MS90725-129	BOLT, 625-11 UNC -2A X 2 00 LG	2
3	96906	MS35338-50	WASHER, LOCK	2
4	2K654	AVLALBBF9999	AIR COMPRESSOR ASSEMBLY	1
5	96906	MS51873-125B	NIPPLE	1
6	72423	1201-200	ELBOW, 900	1
7	2K654	A0545274K49	PIPE, FLEX, 2 IN	1
8	2K654	75A39	SCREW, CAP	4
9	2K654	60AUX192	FLANGE	1
10	2K654	25C1682	GASKET	1
			END OF FIGURE	



OVERHEAD RESERVIOR MAIN AIR

						2 ENGINE FLOOR PLAN	
						ADAM NUGENT ROSENBERGER, 10/21/2021	
				date	name		
				desig.	07/01/04	dil	
				check	fbd	dil	
				auth.	fbd	dil	
A1	initial design	01/01/0	DDil				1/1
oc	change	date	name	project	project		sheet

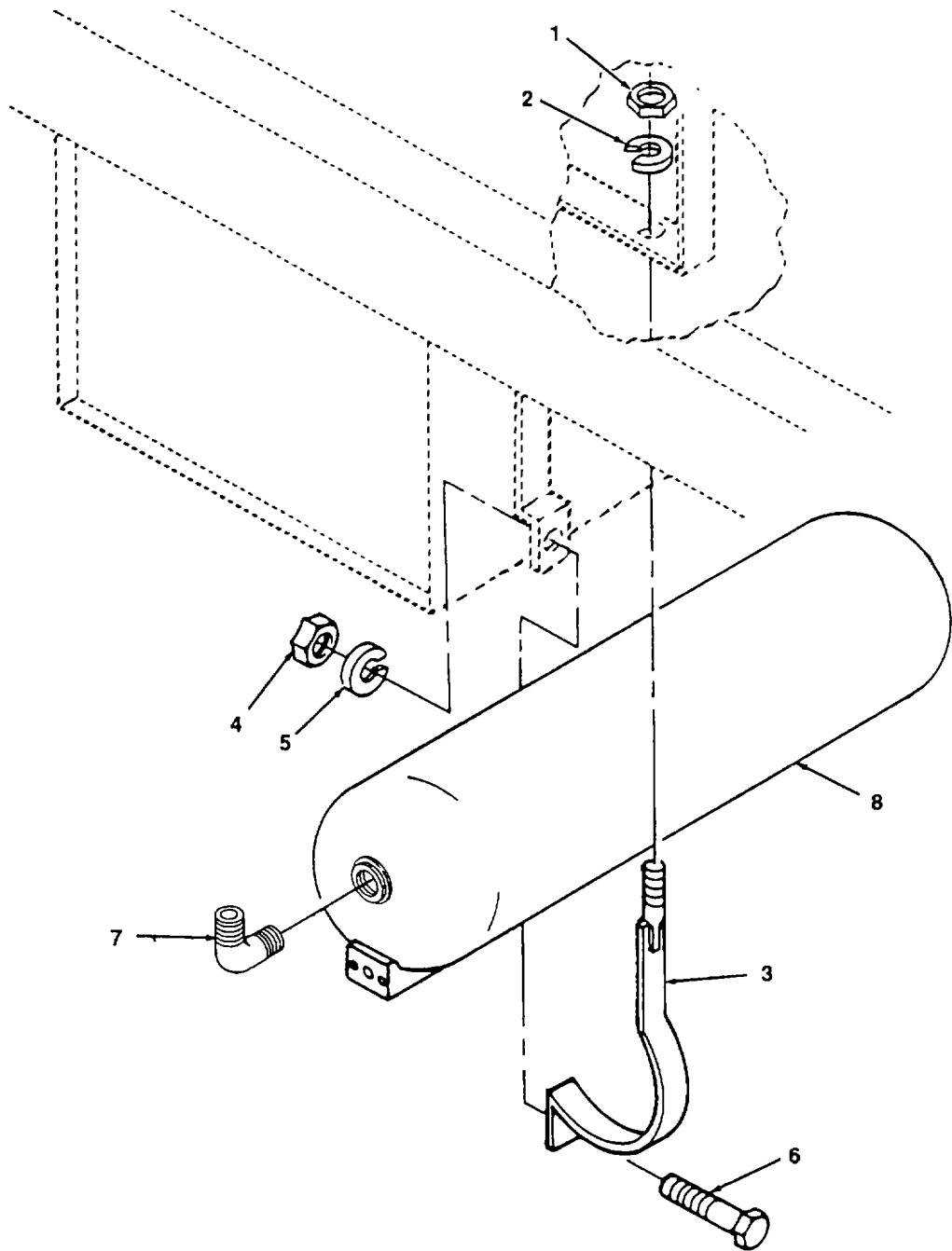


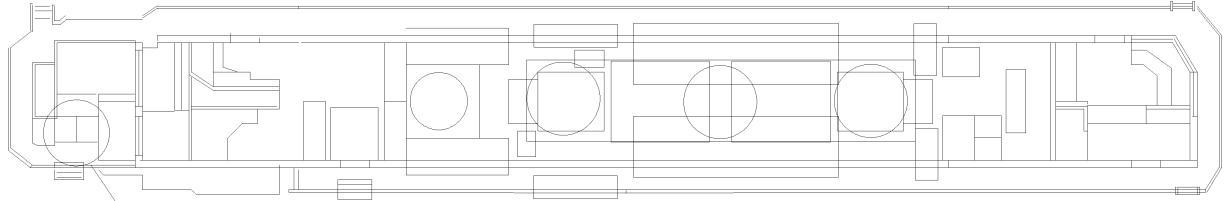
Figure 144. Reservoir Main Air.




## SECTION II

TM 55-2210-224-24P

(1) ITEM NO.	(2) FSCM	(3) PART NUMBER	(4) DESCRIPTION AND USABLE ON CODE	(5) QTY
			GROUP 19 BRAKE SYSTEM, AIR	
			FIG. 144 RESERVOIR, MAIN AIR	
1	96906	MS51967-24	NUT, 3/4 IN	2
2	96906	MS35338-51	WASHER, LOCK, 3/4 IN	2
3	24446		STRAP, SUPPORT	2
4	96906	MS51967-15	NUT, HEX, 1/2	2
5	96906	MS35338-48	WASHER, LOCK, 1/2	2
6	96906	MS90725	SCREW, HEX-HEAD, 1/2 X 1/2	2
7	72423	1043-400	ELBOW	1
8	24446	9962053P1	RESERVOIR, MAIN AIR	1
			END OF FIGURE	



AIRBRAKE COMPARTMENT

					AIRBRAKE COMPARTMENT	
			date	name	ADAM NUGENT ROSENBERGER, 10/21/2021	
		design	07/01/04	dil		
		check	fbd	dil		
		auth	fbd	dil		
A1	initial design	01/01/01	DD	dil	1/1	
loc	change	date	name	project	project	sheet

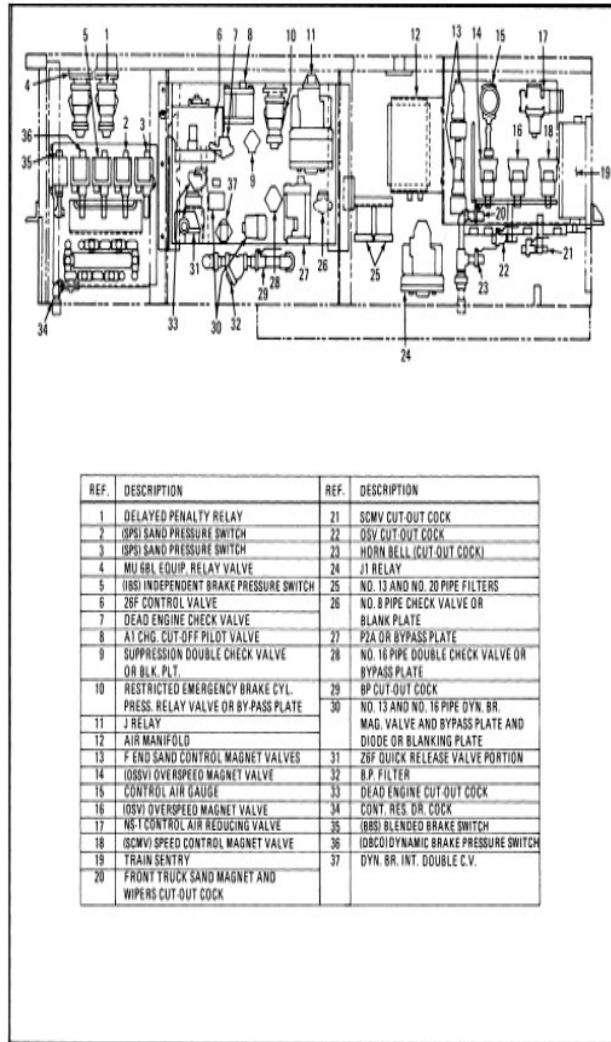
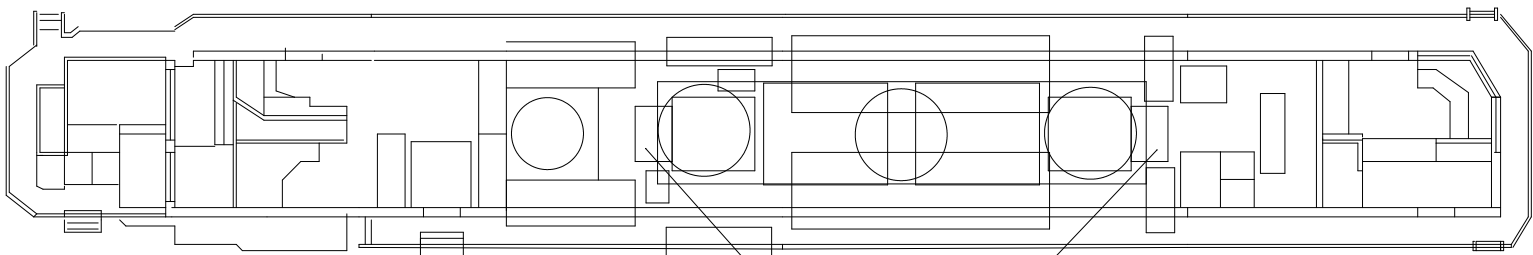


FIG. 26. AIR BRAKE COMPARTMENT.



# AUXILIARY GENERATORS

						AUXILIARY GENERATORS	
				date	name	ADAM NUGENT ROSENBERGER, 10/21/2021	
				desig. 07/01/04	dil		
				check fbd	dil		
				auth. fbd	dil		
A1	initial design	01/01/0	DDil			1/1 sheet	
loc	change	date	name	project	project		



4833-067.2

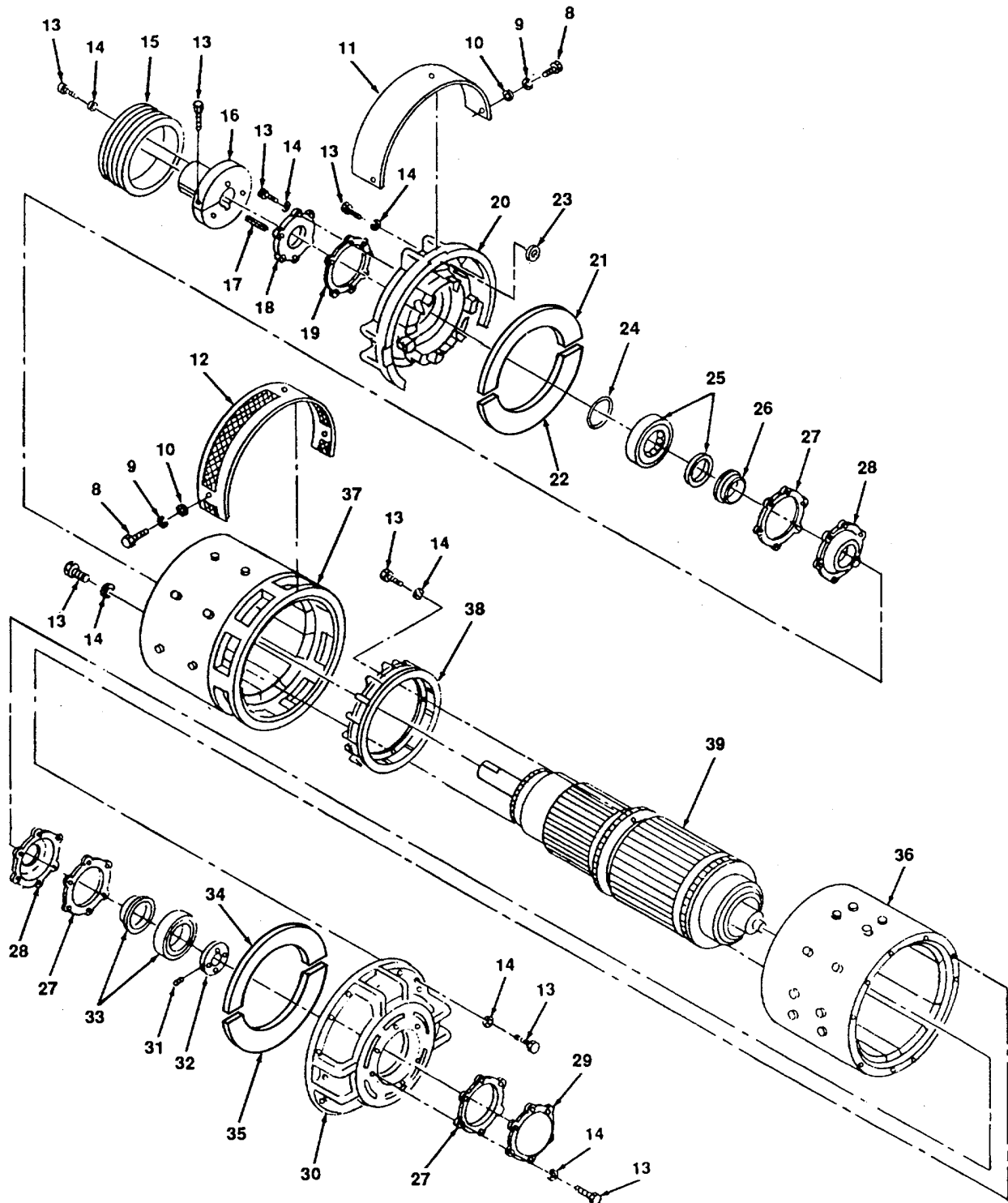
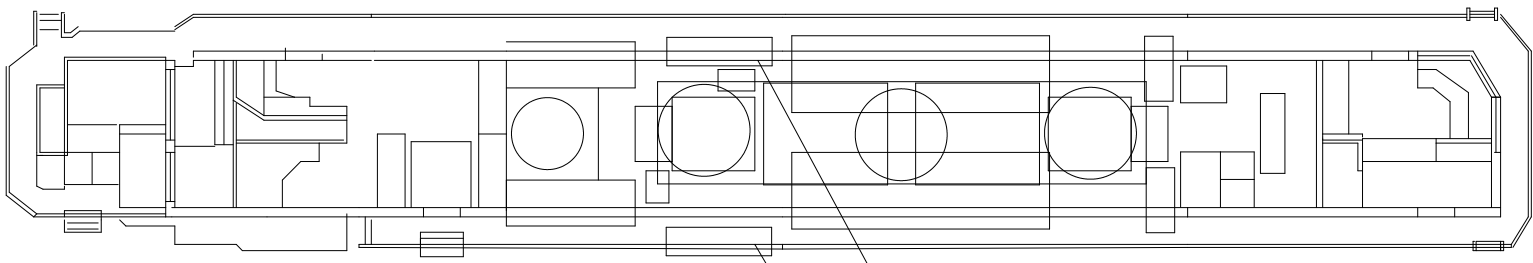


Figure 67. Generator Exciter, Auxiliary Assembly (Sheet 2 of 2).

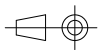
(1) ITEM NUMBER	(2) FSCM	(3) PART NUMBER	(4) DESCRIPTION AND USABLE ON CODE (UOC)	(5) QTY
1			GROUP 11 GENERATOR, EXCITER, AUXILIARY GROUP  FIG. 67 GENERATOR, EXCITER, AUXILIARY ASSEMBLY  LEAD, ELECTRICAL, MADE FROM; WIRE, 14 AWG, P/N 8491796 (72915), TERMINAL, LUG, CABLE LEAD, P/N 370285 (79500) REF. DES: AG+, AG-, HF1+, EFZ+, EFA+, EF8+	6
2	96906	MS90725-114	BOLTS, HEX-HEAD, 7/8 IN.	4
3	96906	M535338-18	WASHER, FLAT, 7/8 IN.	8
4	96906	MS90725-215	SCREW, HEX, ADJUSTING	2
5	96906	MS51967-27	NUT, ADJUSTING	1
6	79500		BRACKET, MOUNTING	1
7	79500	YG-49D	GENERATOR, EXCITER, AUXILARY ASSEMBLY	1
8	96906	MS90275-201	SCREW, HEX HEAD	13
9	96906	MS51922-57	WASHER, LOCK	13
10	96906	MS27183-24	WASHER, FLAT	13
11	79500	1021212	COVER, COMMUTATOR INSPECTION	2
12	79500		COVER, COMMUTATOR SCREEN	1
13	96906	MS90725-58	SCREW, HEX-HEAD 3/8 X 3/4	20
14	96906	MS35338-46	WASHER, LOCK 3/8 IN.	20
15	79500		PULLEY	1
16	79500		INNER PULLEY	1
17	79500		KEY	1
18	79500	1546473	CAP, OUTER EXCITER	1
19	79500	1020202	GASKET	1
20	79500	1536473	HOUSING, EXCITER END	1
21	79500	1445267	RING, GENERATOR END POS	1
22	79500	1445266	RING, GENERATOR, END NEG	1
23	79500	1133859	WASHER, RING SUPPORT	6
24	79500	14882276	SLINGER OIL	1
25	52676	NU312CH	BEARING, ASSEMBLY, INCL. RACE INNER	1
26	79500	1407971	SPACER, BEARING	1
27	79500	1020201	GASKET	1
28	79500	1020200	CAP, INNER EXCITER	1
29	79500	1243241	CAP, OUTER AUXILIARY, GENERATOR END	1

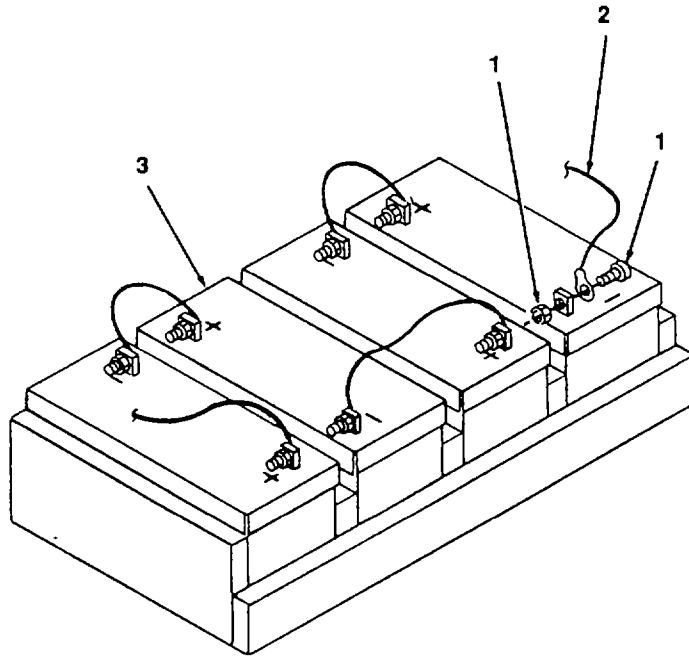
(1) ITEM NUMBER	(2) FSCM	(3) PART NUMBER	(4) DESCRIPTION	(5) QTY
			<b>FIG. 67 GENERATOR, EXCITER, AUXILIARY ASSEMBLY (CONT)</b>	
30	79500		HOUSING, AUXILIARY END	1
31	79500		SCREW, SET	2
32	79500		NUT, LOCK	1
33	52676	6312JC3	BEARING, BALL, ANNULAR, INCL. INNER RACE	1
34	79500	1612039	RING, EXCITER POS	1
35	79500	1612040	RING, EXCITER NEG	1
36	79500		FRAME, AUXILIARY	1
37	79500		FRAME, EXCITER	1
38	79500		FAN, COOLING	1
39	79500	1579091	ARMATURE, GENERATOR	1
			END OF FIGURE	





# BATTERIES AND CONNECTIONS

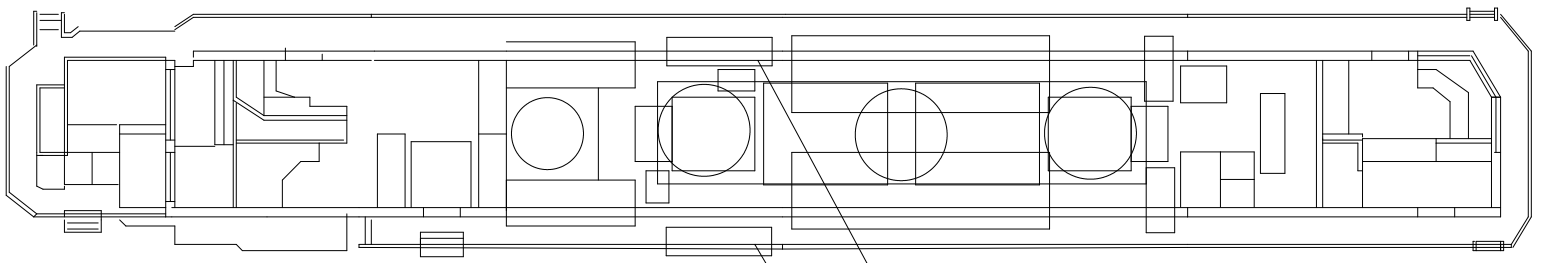
						BATTERIES AND CONNECTIONS	
				date	name	ADAM NUGENT ROSENBERGER, 10/21/2021	
				desig. 07/01/04	dil		
				check fbd	dil		
				auth. fbd	dil		
A1	initial design	01/01/0	DDil			1/1 sheet	
loc	change	date	name	project	project		



4834-040

Figure 40. Batteries and Connections.

(1) ITEM NO.	(2) FSCM	(3) PART NUMBER	(4) DESCRIPTION AND USABLE ON CODE	(5) QTY
			GROUP 08 ELECTRICAL ACCESSORIES	
			FIG. 40 STORAGE BATTERIES, CONNECTIONS	
1	24446	8077275	BOLT ASSEMBLY, CONNECTOR	8
2			LEAD, ELECTRICAL, MAKE FROM, 3/0 CABLE, BY(-), BX(+)	5
3	24446	8HHG25	TERMINAL, 3/0 WITH 3/8 STUD, P/N 89110325513	8
			BATTERY	4
			END OF FIGURE	



# BATTERY BOX

						BATTERY BOX	
				date	name	ADAM NUGENT ROSENBERGER, 10/21/2021	
				desig. 07/01/04	dil		
				check fbd	dil		
				auth. fbd	dil		
A1	initial design	01/01/01	DDil			1/1 sheet	
loc	change	date	name	project	project		

**TECHNICAL MANUAL**

**UNIT, INTERMEDIATE DIRECT SUPPORT  
AND GENERAL SUPPORT  
REPAIR PARTS AND SPECIAL TOOLS LIST**

**LOCOMOTIVE, DIESEL-ELECTRIC,  
56-1/2-INCH GAGE, 60-TON, 500 HP,  
0-4-4-0 WHEEL,  
MODEL RS-4-TC-1A  
NSN 2210-01-158-2978**

**Approved for public release; distribution is unlimited**

---

**HEADQUARTERS, DEPARTMENT OF THE ARMY  
10 APRIL 1990**



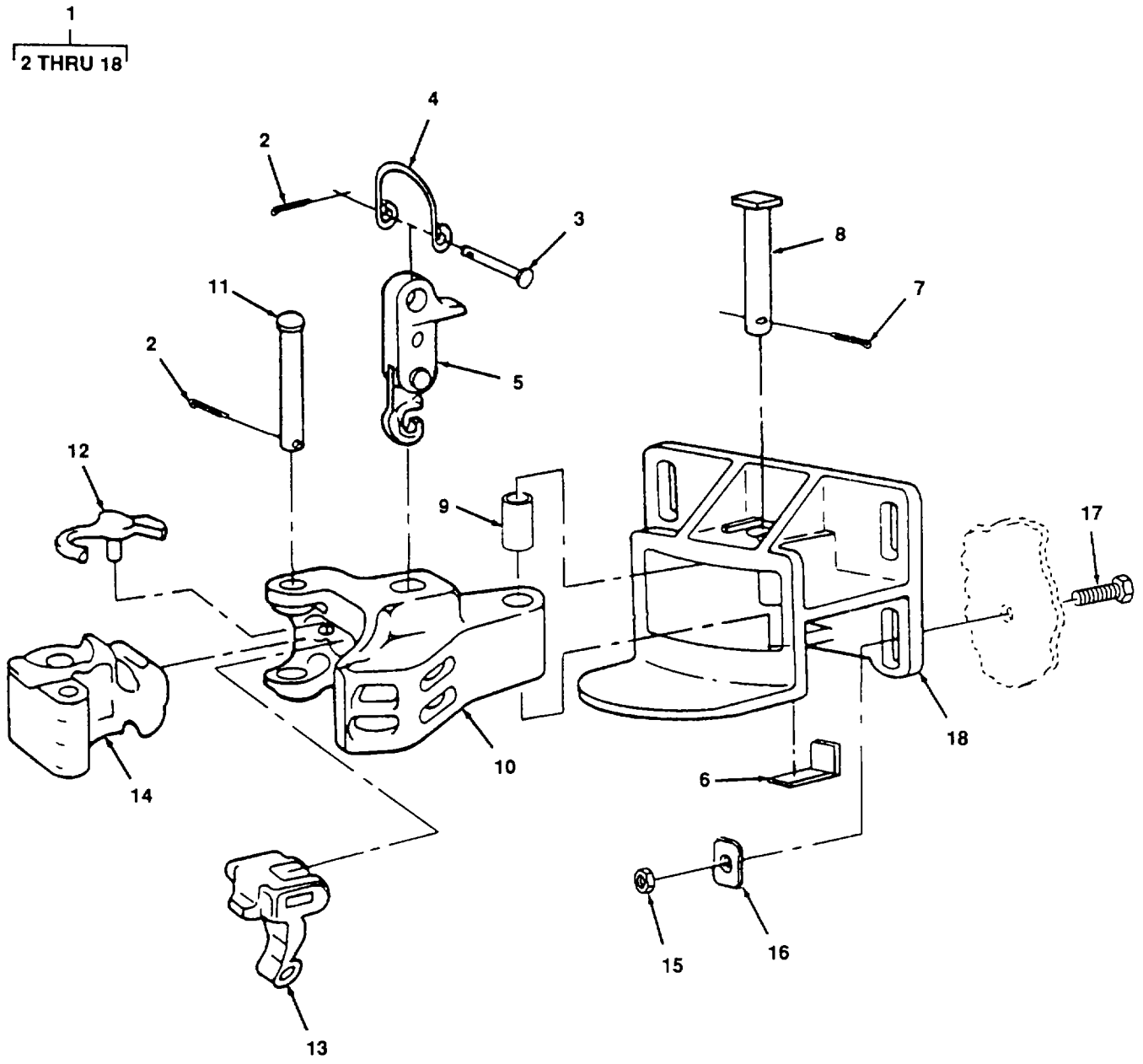


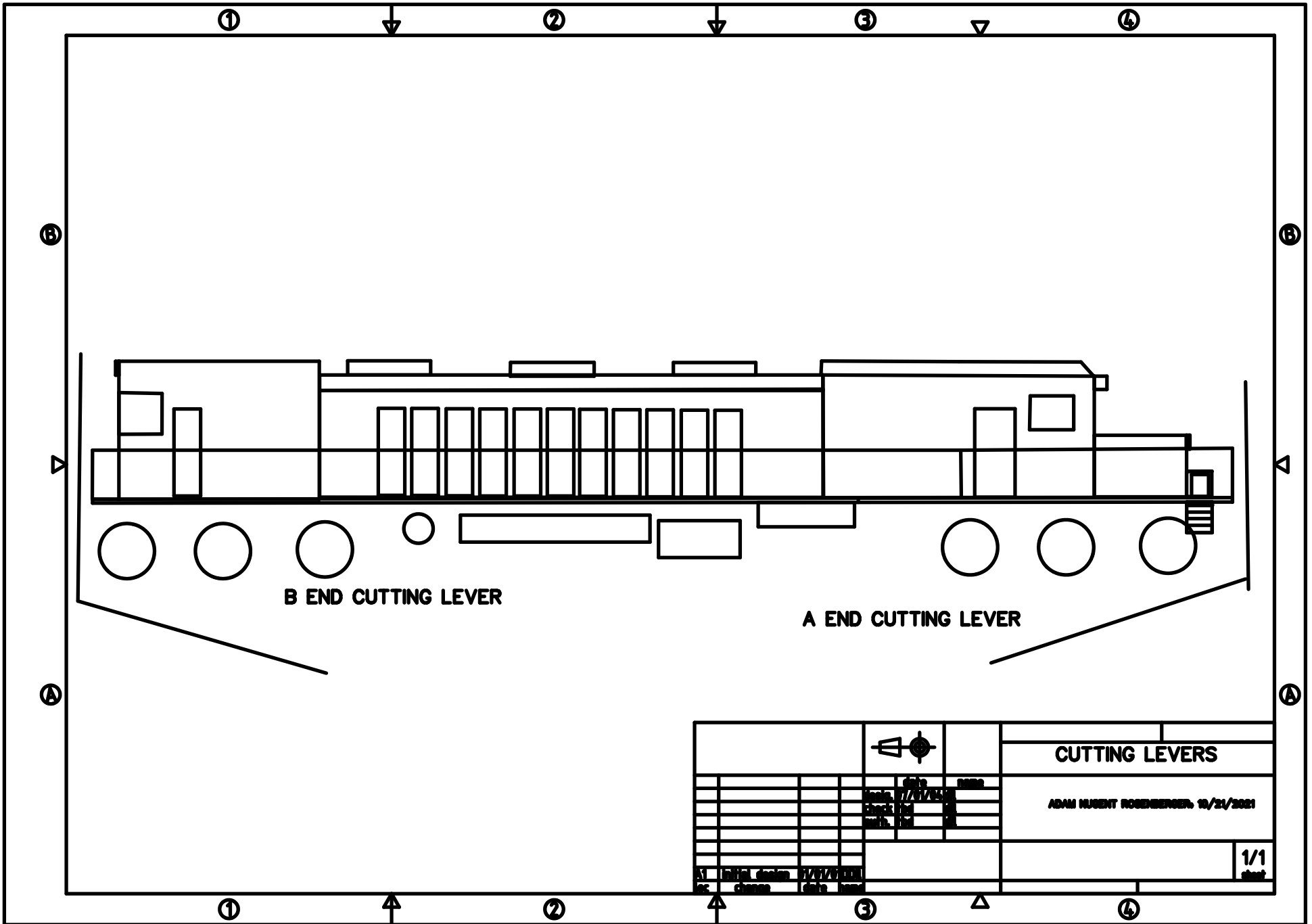
Figure 155. Couplers

## SECTION II

TM 55-2210-224-24P

(1) ITEM NO.	(2) FSCM	(3) PART NUMBER	(4) DESCRIPTION AND USABLE ON CODE	(5) QTY
			GROUP 22 DRAFT GEAR GROUP	
			FIG. 155 COUPLERS	
1	24446	8825114	COUPLER, RAILWAY, AUTOMATIC	2
2	96906		PIN, COTTER 1/4 IN DIA X 2 IN LONG (NSN 5315-00-209-7273)	2
3			PIN, HEADED, STRAIGHT UNCOUPLER CLEVIS, 3/4 IN DIA X 2 1/2 IN LONG	2
4			LOOP, UNCOUPLER CLEVIS	2
5	24446	145X52	LIFTER, LOCK	1
6			FLANGE, TOGGLE PIN LOCK	2
7	96906		PIN, COTTER 3/8 IN DIA X 3 IN LONG (NSN 5315-00-846-4297)	2
8	24446	279387	PIN, TOGGLE, EYE COLLAR (NSN 5315-417-5007)	
9	24446	145X47	BUSHING, COUPLER (NSN 3120-417-4383)	2
10	24446	9962572P1	COUPLER, POCKET (NSN 2240-00-127-9035)	2
11	24446	145X49	PIN, STRAIGHT, HEADED KNUCKLE	2
12	76663	E30	THROWER, AUTOMATIC COUPLER	2
13	76663	E40	LOCK, COUPLER (NSN 2240-161-2236)	2
14	24446	145X48	KNUCKLE	2
15	96906	MS51967-33	NUT, HEX 1 1/8-7 UNC	8
16			WASHER, PLATE	8
17	96906	MS90725-264	SCREW, HEX-HEAD 1 1/8-7 UNC X 6 IN LONG	8
18			YOKE, SUPPORT	1
			END OF FIGURE	





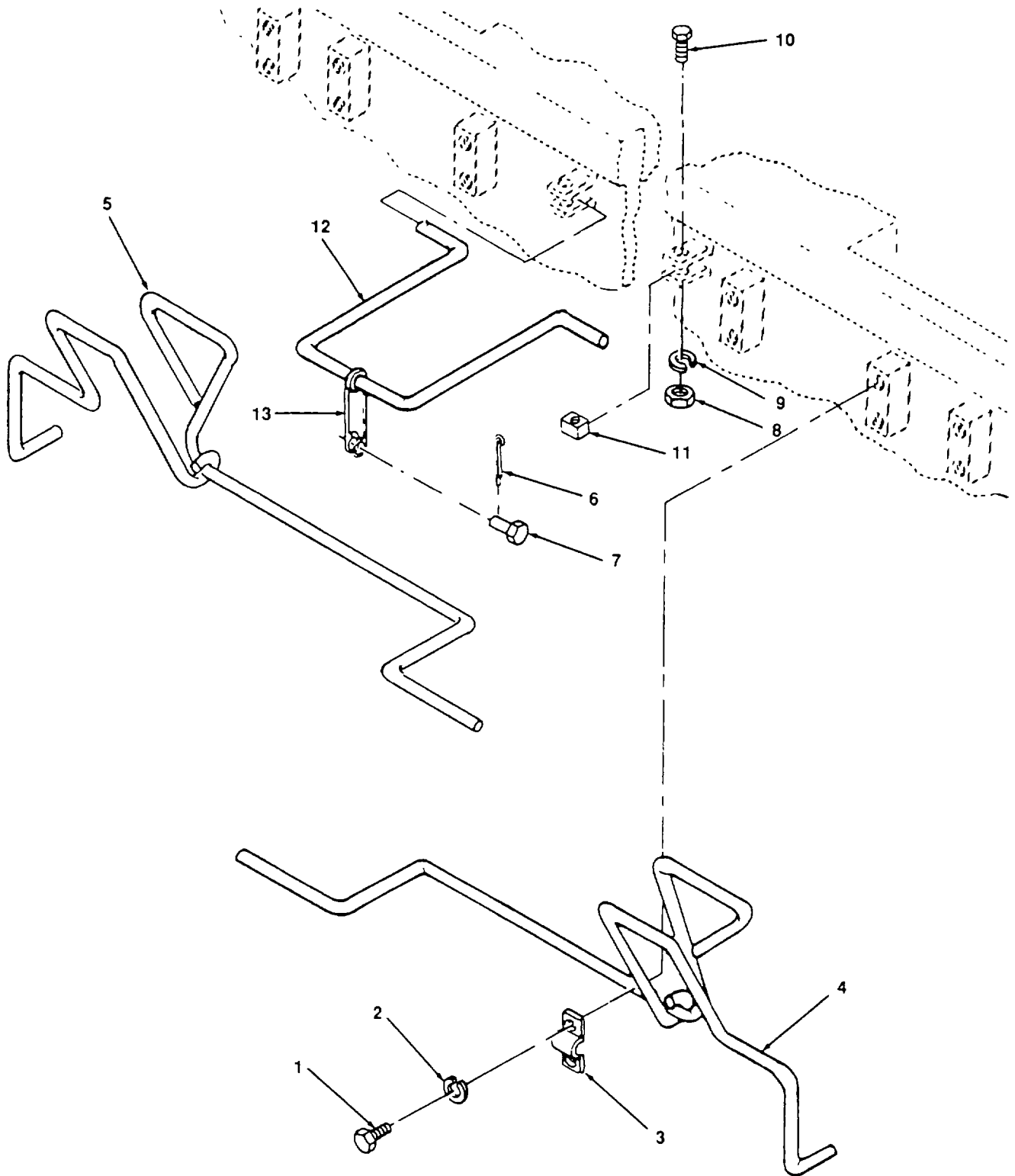
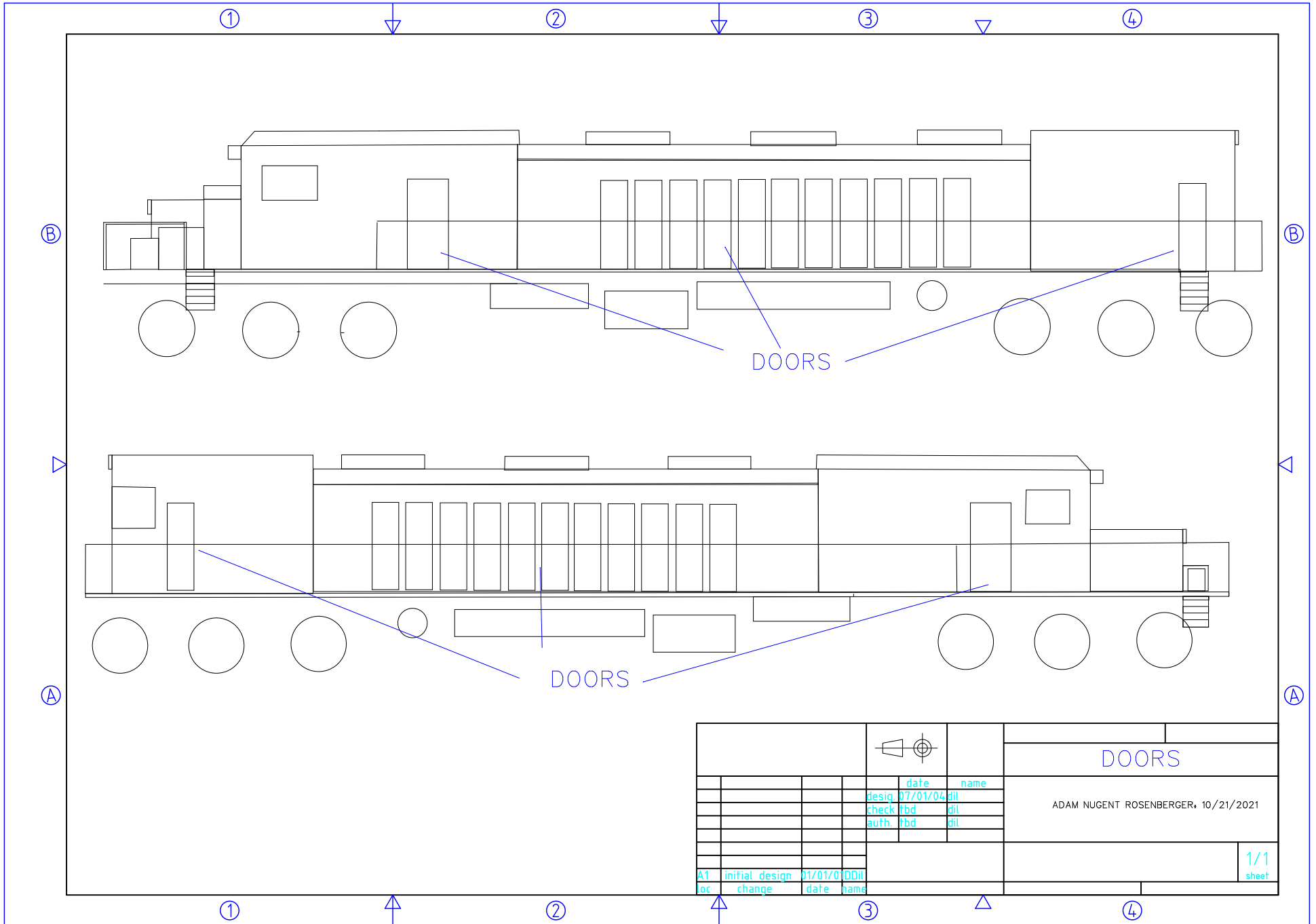


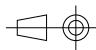
Figure 3. Cutter Levers.

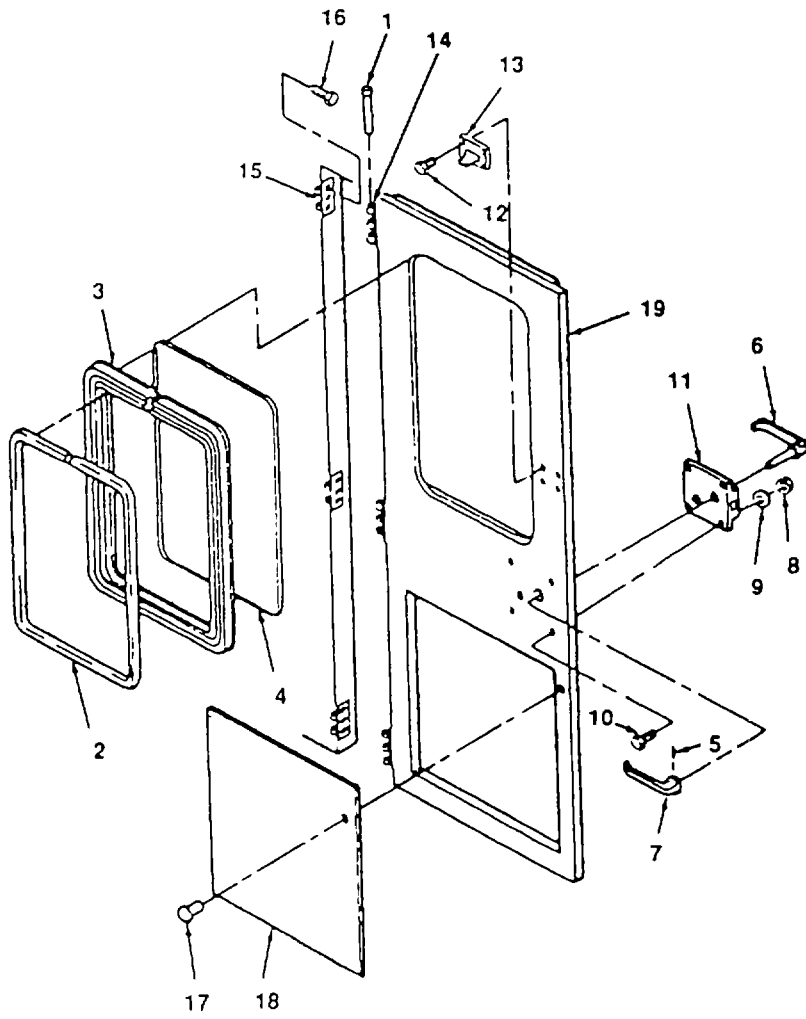
(1) ITEM NO.	(2) FSCM	(3) PART NUMBER	(4) DESCRIPTION AND USABLE ON CODE	(5) QTY
			GROUP 01 BODY GROUP	
			FIG 3 CUTTER LEVER	
1	96906	MS90725-158	SCREW, HEX HED , 5/8 X 1 IN.	12
2	96906	MS35338-50	WASHER, LOCK 5/8 IN	12
3			BRACKET	6
4	24446	172X32	LEVER W/STOPS LEFT HAND	1
5	24446	172X31	LEVER W/STOPS, RIGHT HAND	1
6	96906		COTTER KEY, 1/4 X 2 IN (NSN 5315-00-209-7273)	1
7			PIN - LIFTING BAR, 3/4 X 2 5/8	1
8	96906	MS51967-09	NUT, HEX, 3/8	2
9	96906	MS27183-14	WASHER, LOCK, 3/8 IN	2
10	96906	MS90725-67	SCREW, HEX, 3/8 X 2 1/2 IN 16-UNC	2
11			RETAINER BLOCK	2
12	24446	6741987GZ	LEVER, UNCOUPLING, CENTER	1
13			CLEVIS	2
			END OF FIGURE	



DOORS

DOORS

					DOORS	
			date	name		
			desig.	07/01/04	dil	
			check	fbd	dil	
			auth.	fbd	dil	
						ADAM NUGENT ROSENBERGER, 10/21/2021
						1/1 sheet
A1	initial design	01/01/00	DDil			
loc	change	date	name			



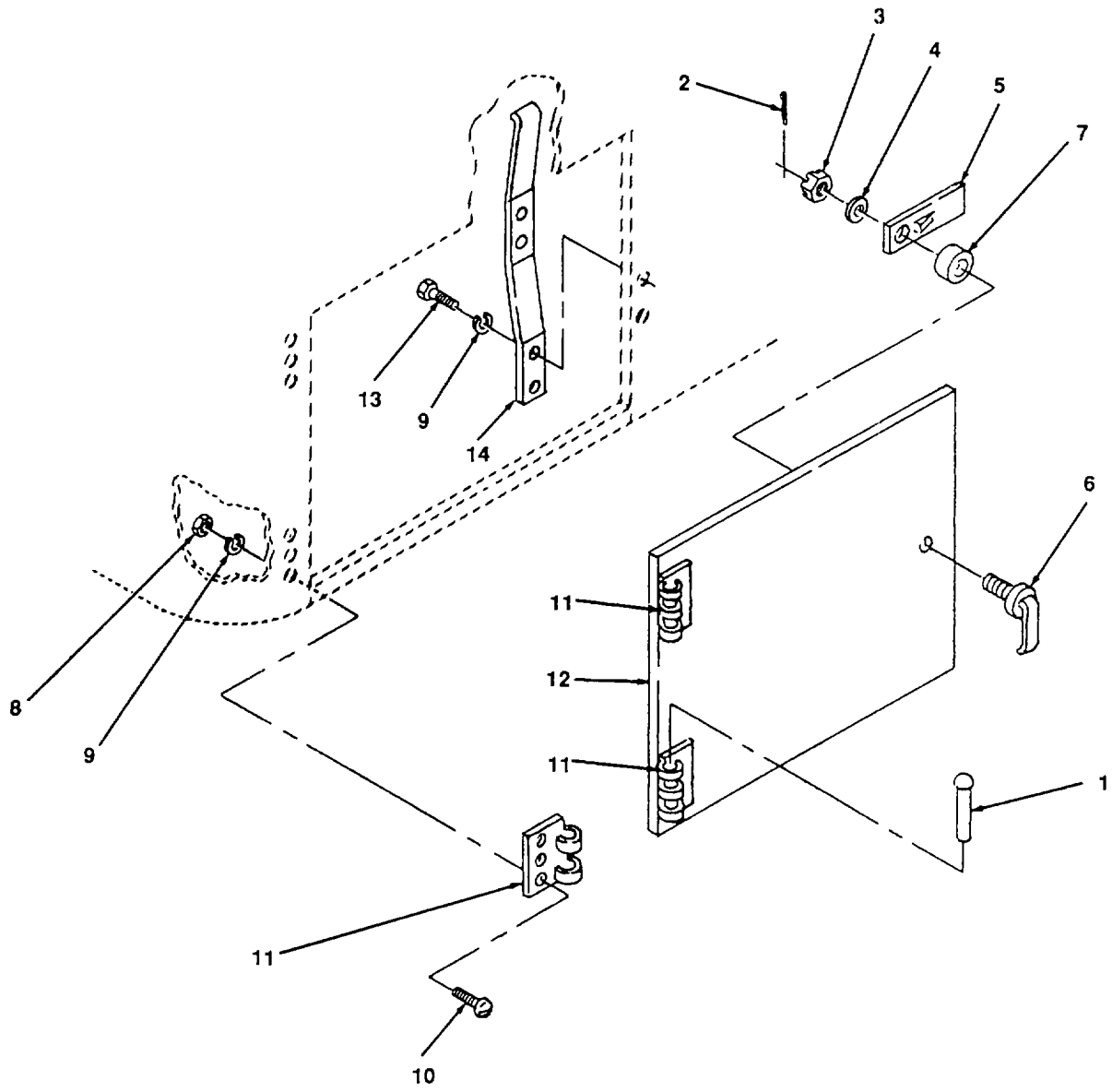
4834 012

Figure 12. Cab Door and Lock.

## SECTION II

TM 55-2210-224-24P

(1) ITEM NO.	(2) FSCM	(3) PART NUMBER	(4) DESCRIPTION AND USABLE ON CODE	(5) QTY
			GROUP 02 CAB GROUP	
			FIG. 12 CAB DOOR AND LOCK	
1	96906		PINS, 5/16 X 3 1/2 IN (NSN 5306-00-026-4839)	3
2	34339	PP-C9233	WEATHERSTRIP FILLER	V
3	34339	PP-C9238	WEATHERSTRIP	V
4	81348	DD-GT-451	GLASS	1
5	AU-VE-CO	9006	PIN, SPRING, 1/8 X 3/4 IN.	2
6			HANDLE, INSIDE	1
7			HANDLE, OUTSIDE	1
8	96906	MS51967-09	NUT, FLAT HEAD, 1/4	4
9	96906	MS35338-44	WASHER, LOCK, 114	4
10	96906	MS90725-6	SCREWS, 1/4 X 3/4 (NSN 5305-00-068-0502)	4
11			DOOR LOCK ASSY	1
12	96906		SCREW, MACHINE (NSN 5305-00-068-0502)	4
13			DOOR CATCH	1
14	96906		HINGE HALVE, INSIDE, 3 1/2 X 1 1/4 IN	3
15	96906		HINGE HALVE, OUTSIDE	3
16	96906		SCREWS, CSKH, 1/4-20 X 1 1/2 (NSN 5305-00-958-5248)	18
17	96906		RIVET, 3/16 X 1/4 (NSN 5320-00-493-4101)	8
18	96906		SCREEN, 23 1/2 X 23 IN	1
			END OF FIGURE	



4834 013

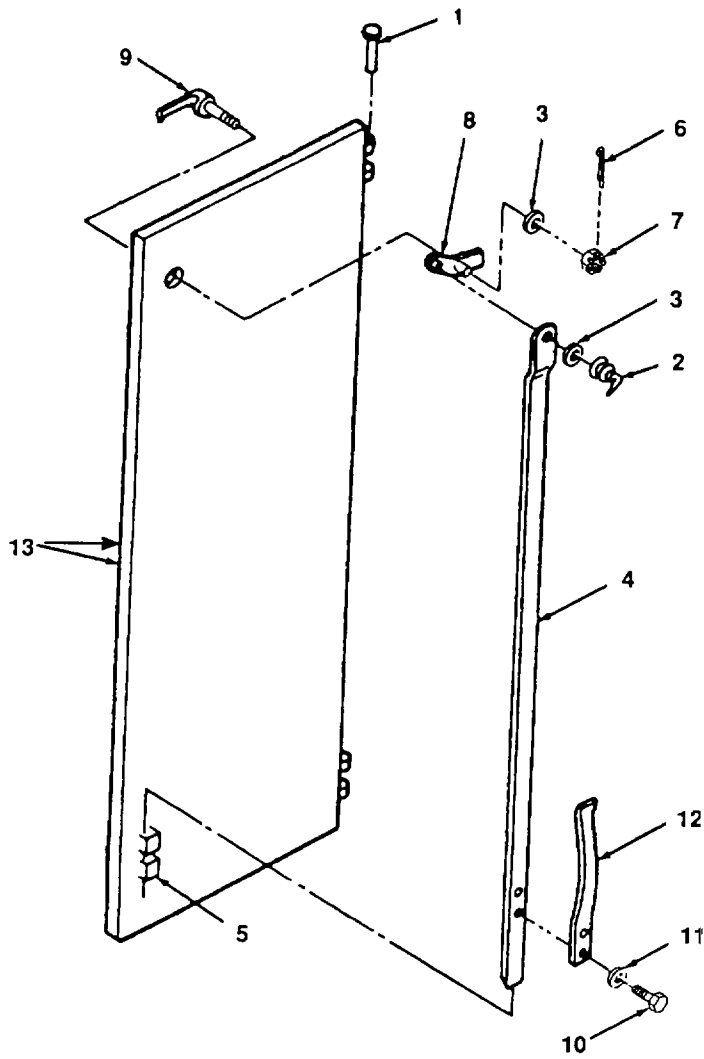
Figure 13. Door, Side Compartment.

## SECTION II

TM 55-2210-224-24P

(1) ITEM NO.	(2) FSCM	(3) PART NUMBER	(4) DESCRIPTION AND USABLE ON CODE	(5) QTY
			GROUP 02 CAB GROUP	
			FIG. 13 DOOR, SIDE COMPARTMENT	
1	96906		PIN, 5/16 X 3 1/2 IN LONG (NSN 5306-00-026-4839)	2
2	96906		PIN, COTTER, 1/8 X 3/4 (NSN 5310-00-236-8357)	1
3	96906		NUT, CASTLE, 1/2 IN (NSN 5310-00-281-5346)	1
4	96906	MS27183-18	WASHER, FLAT, 1/2 IN (NSN 5310-00-984-8818)	1
5			LATCH	1
		672915 6731285	HANDLE	1
7			SPACER, 1/2 X 1/ 3/4 IN	1
8	96906	MS51967-06	NUT, 5/16 IN	6
9	96906	MS35338-45	WASHER, LOCK, 5/16 IN	8
10	96906	MS90725-34	SCREW, 5/16 X 1 IN (NSN 5305-00-080-3639)	6
11			HINGE, DOOR	2
12			DOOR	1
13	96906	MS90725-325	SCREW, HEX, 5/16	2
14			SPRING	1
			END OF FIGURE	





4834-014

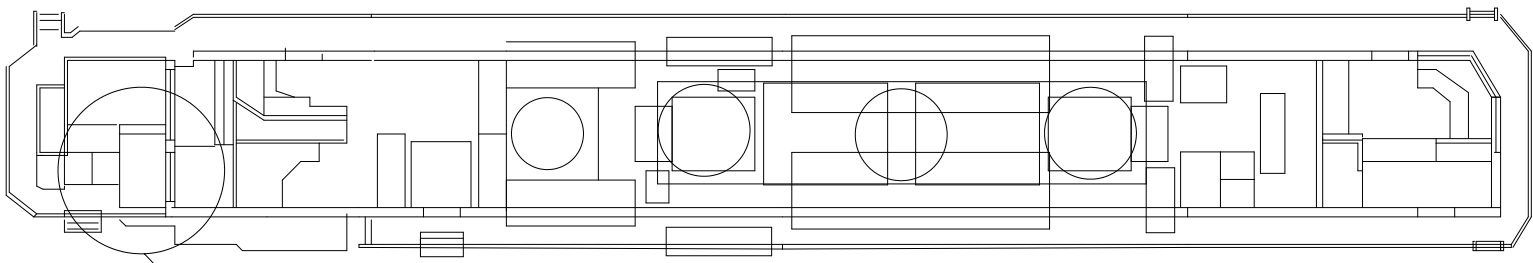
Figure 14. Electrical Equipment Cabinet Door.

## SECTION II

TM 55-2210-224-24P

(1) ITEM NO.	(2) FSCM	(3) PART NUMBER	(4) DESCRIPTION AND USABLE ON CODE	(5) QTY
			GROUP 02 CAB GROUP	
			FIG. 14 DOOR, ELECTRICAL EQUIPMENT CABINET	
1			PIN, 1/4 X 3 1/2	2
2			SPRING	1
3	96906	MS27183-18	WASHER, FLAT 1/2 IN	2
4			LATCH BAR, 41 IN LONG	1
5			GUIDE LOOP 5/16 X 1	2
6	96906		COTTER PIN, 1/8 X 3/4 (NSN 5315-00-236-8357)	1
7	96906	MS51967-15	NUT, 1/2 IN (NSN 5310-00-281-5346)	1
8			LATCH LEVER, 4 1/2 IN X 2 1/8 IN	1
9		MS90725-3	DOOR HANDLE	1
10	96906		SCREW, 1/4 IN X 1/2 IN (NSN 5305-00-071-2506)	2
11	96906	MS35338-44	LOCKWASHER, 1/4 IN	2
12			SPRING, 3/8 WIDE X 8 1/2 IN LONG	2
13			DOOR	
			END OF FIGURE	





ENGINEER'S HEATER

				ENGINEER'S HEATER	
			date	name	
			desig.	07/01/04	dil
			check	fbd	dil
			auth.	fbd	dil
A1	initial design	01/01/0	DDil		
loc	change	date	name	project	project
					1/1 sheet

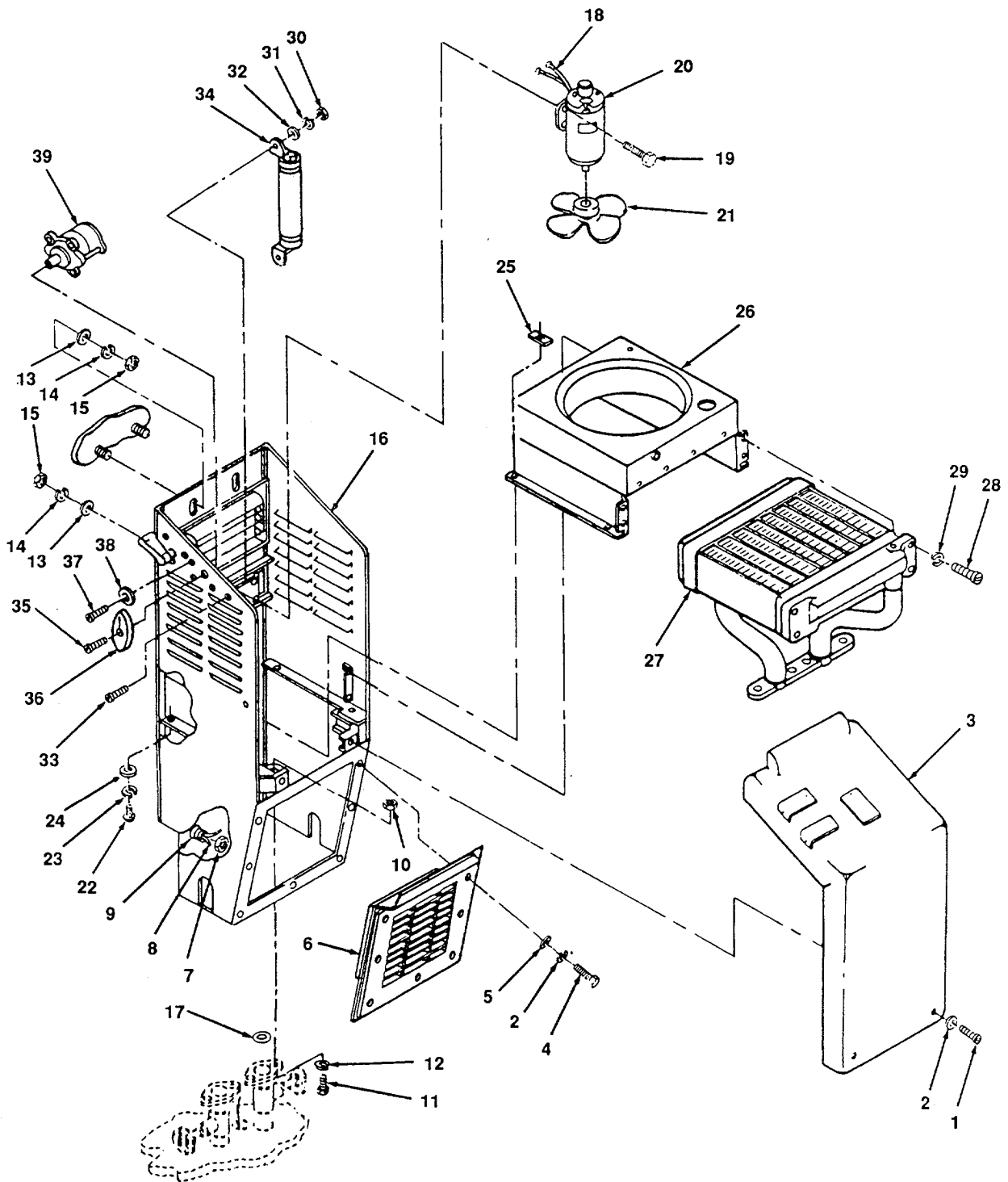
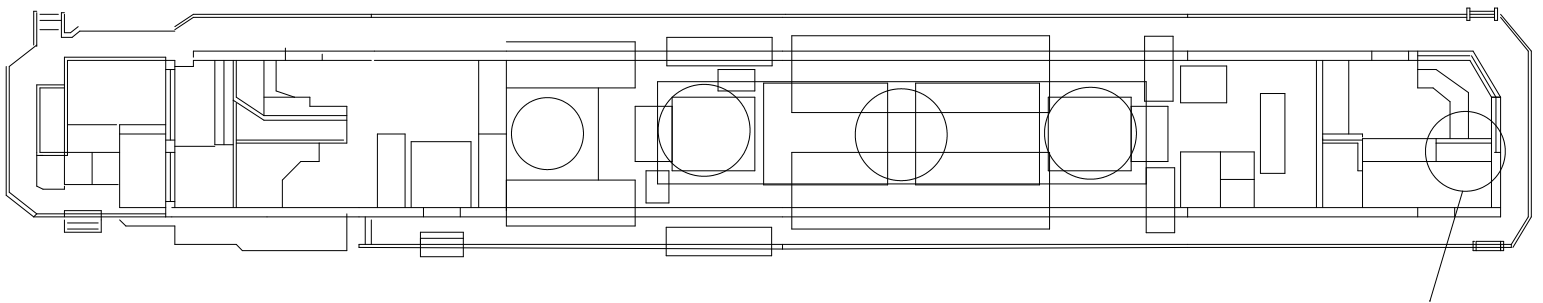


Figure 21. Heater Assembly, Engineer's.

(1) ITEM NUMBER	(2) FSCM	(3) PART NUMBER	(4) DESCRIPTION AND USABLE ON CODE (UOC)	(5) QTY
			<b>GROUP 05 CAB HEATER GROUP</b>	
			<b>FIG. 21 HEATER ASSEMBLY, ENGINEERS</b>	
1	96906	MS90725	SCREW, 7/8-12 UNC	2
2	96906	MS35338-52	WASHER, LOCK, 7/8	9
3	67049		COVER	1
4	96906	MS90725-7	SCREWS, HEX-HEAD, 1/4 X 7/8	8
5	96906	MS35338-52	WASHER, LOCK	7
6	67049		COVER, GRILL, LOWER	1
7	59730	511	CONDUIT NUT (NSN 5975-01-185-2223)	1
8			LEAD, ELECTRICAL, MAKE FROM; WIRE, 14 AWG 8491796 (72915), TERMINAL, 14-10 P1434780 (59400), REF. DES; CONDUIT, 1/2 IN., MAKE FROM 8166953 (81349)	2
9			NUT, HEX	1
10	96906	MS51967-09	WASHERS, LOCK, 3/8	4
11	96906	MS35338-46	WASHERS, LOCK, 3/8	4
12	96906	MS90725-64	SCREW, HEX-HEAD, 3/8 X 1 1/2	4
13	96906	MS51967-15	NUT, HEX	2
14	96906	MS35338-48	WASHERS, LOCK	2
15	96906	MS37183-18	WASHERS, FLAT	2
16	50024	12400123-2	HEATER	1
17	82722		O-RING (NSN 5330-00-161-5408)	2
18			LEAD, ELECTRICAL, FAN MOTOR, WL52T, MAKE FROM; WIRE, 14 AGW, 8491796 (72915) TERMINAL 14-10, 01434780 (59400)	2
19	96906	MS90725-113	SCREW, CAP	2
20	67049	A230910	MOTOR, REF. DES: HM1	2
21	67049		FAN	1
22	67049		SCREWS	4
23	67049		WASHER, LOCK	4
24	67049		WASHER, FLAT	4
25	67049		CLIP	1
26	67049		GUARD, FAN	1

(1) ITEM NUMBER	(2) FSCM	(3) PART NUMBER	(4) DESCRIPTION AND USABLE ON CODE (UOC)	(5) QTY
			<b>FIG. 21 HEATER ASSEMBLY, ENGINEERS (CONT)</b>	
27	67049		CORE, RADIATOR	1
28	67049		SCREWS	4
29	67049		WASHER, LOCK	4
30	67049		NUT, HEX	2
31	67049		WASHER, LOCK	2
32	67049		WASHER, FLAT	2
33	67049		SCREW	2
34	67049		RESISTOR	1
35	67049		SCREW	1
36	67049		KNOB	1
37	67049		SCREW	2
38	67049		WASHERS, LOCK	2
39	67049		SWITCH, FAN	2
			END OF FIGURE	



FIREMAN'S HEATER

						FIREMAN'S HEATER	
				date	name	ADAM NUGENT ROSENBERGER, 10/21/2021	
				desig. 07/01/04	dil		
				check fbd	dil		
				auth. fbd	dil		
A1	initial design	01/01/0	DDil			1/1 sheet	
loc	change	date	name	project	project		



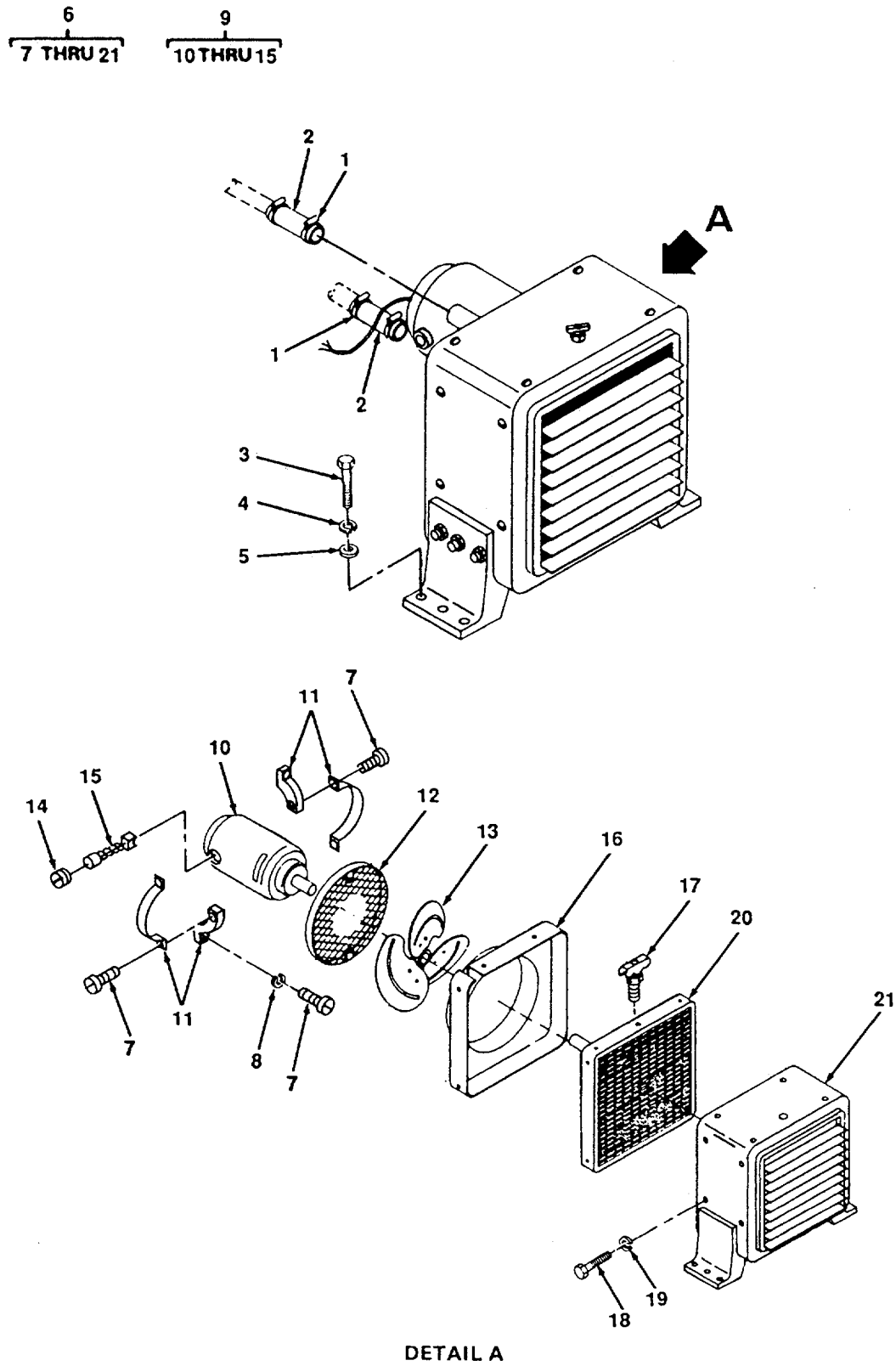
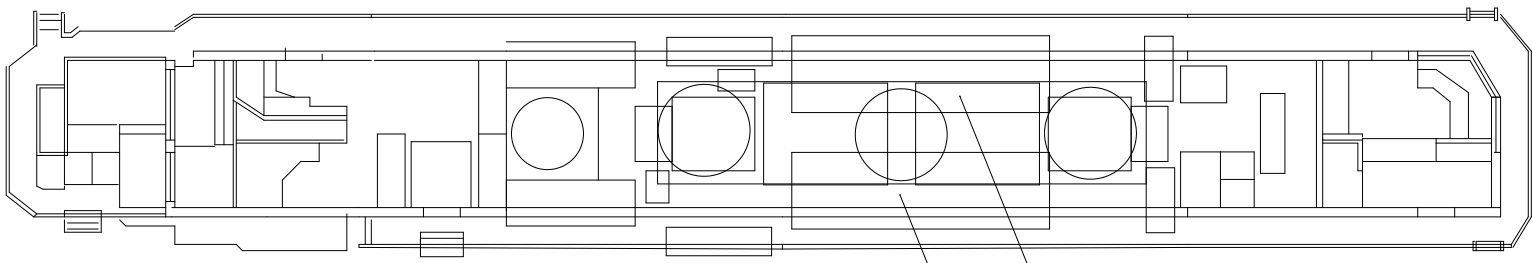


Figure 20. Heater Assembly, Fireman's.

(1) ITEM NUMBER	(2) FSCM	(3) PART NUMBER	(4) DESCRIPTION AND USABLE ON CODE (UOC)	(5) QTY
			<b>GROUP 05 CAB HEATER GROUP</b>	
			<b>FIG. 20 HEATER ASSEMBLY, FIREMANS</b>	
1	96906		CLAMP, HOSE (NSN 4730-00-908-3193)	4
2	96906		HOSE, 1 1/4X4 1/2 IN., MAKE FROM; NSN 4720-00-235-1428	2
3	96906	MS90725-34	SCREW, HEX-HEAD, 5/16X 1 IN.	4
4	96906	MS35338-45	WASHER, LOCK, 5/16 IN.	4
5	96906	MS27183-12	WASHER, FLAT, 5/16	4
6	02451	12400117	HEATER ASSEMBLY	1
7			SCREW, HEX-HEAD	3
8			WASHER, LOCK	3
9	90627	24-8-873	MOTOR ASSEMBLY	1
10	75418	B-5913	MOTOR, REF. DES: HMZ	1
11	75418		BRACKET	1
12	75418		SCREEN	1
13	75418		FAN	1
14	75418		CAP, BRUSH, MOTOR	2
15	75418	B5913	BRUSH, ELECTRICAL W/PIGTAIL, TERMINAL AND SPRING (NSN 5977-00-379-1608)	2
16	75418		FRAME, INNER	1
17	75418		PETCOCK	2
18	75418		SCREW, HEX-HEAD	6
19	75418		WASHER, LOCK	6
20	75418	C7756	CORE, HEATER	1
21	75418		HOUSING, HEATER	1
			END OF FIGURE	



# FUEL TANK

						FUEL TANK	
				date	name	ADAM NUGENT ROSENBERGER, 10/21/2021	
				desig. 07/01/04	dil		
				check fbd	dil		
				auth. fbd	dil		
A1	initial design	01/01/00	DDil			1/1 sheet	
loc	change	date	name	project	project		

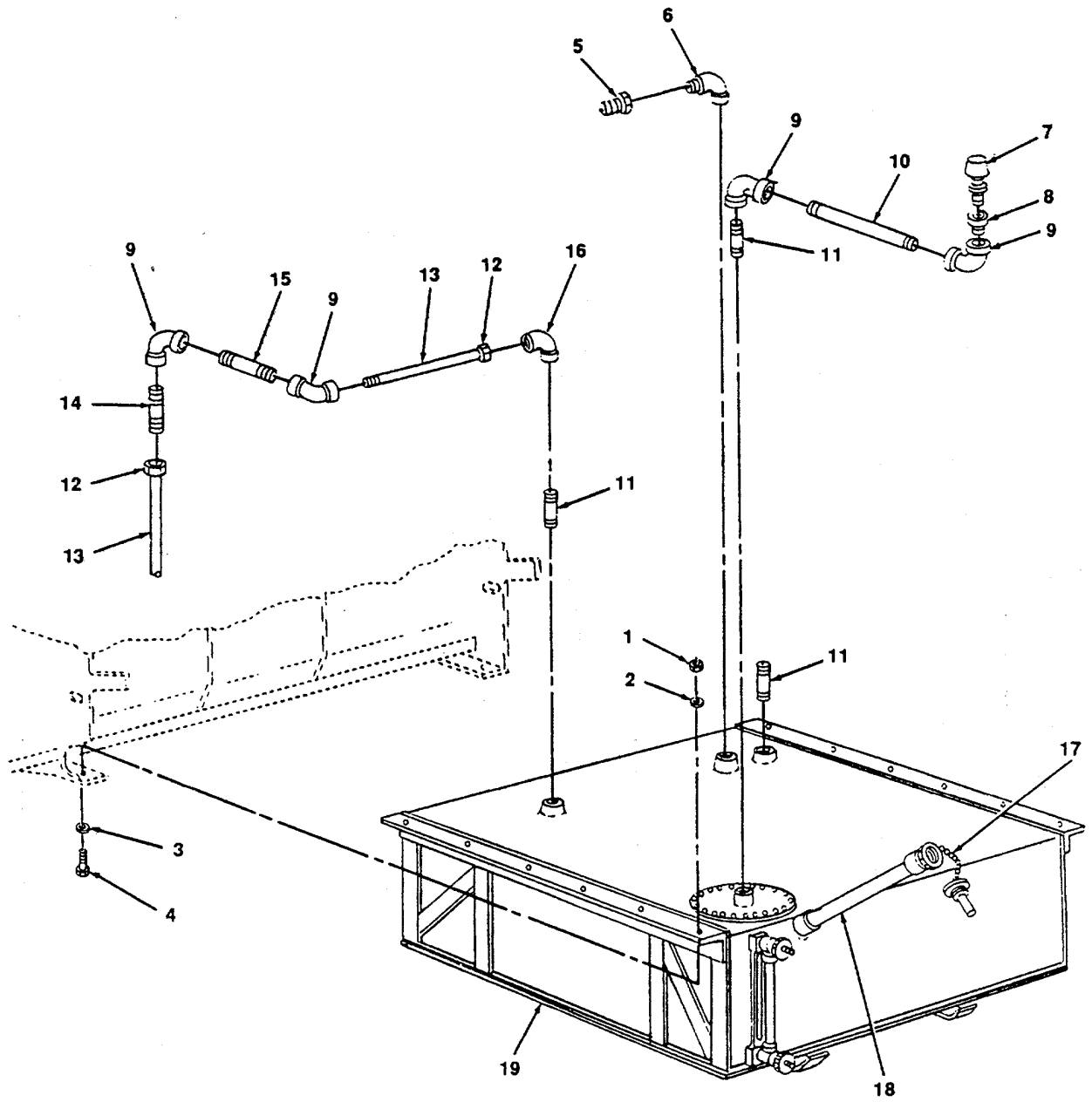


Figure 76. Tank, Fuel.

(1) ITEM NUMBER	(2) FSCM	(3) PART NUMBER	(4) DESCRIPTION USABLE ON CODE (UOC)	(5) QTY
			<b>GROUP 14 FUEL SYSTEM GROUP</b>	
			<b>FIG. 76 TANK, FUEL</b>	
1	96906	MS651967-21	NUT, 5/8	12
2	96906	MS35338-50	WASHER, LOCK, 5/8	12
3	96906	MS21783-21	WASHER, FLAT	12
4	96906	MS90725-164	SCREW, HEX-HEAD, 5/8-11 X 2	12
5	33027	648F1-2X38	ADAPTER TUBE TO PIPE 1/2 IN.	1
6	72423	1203-100	ELBOW STREET 1/2 IN.	1
7	90615	GA5261	VALVE, RELIEF	1
8			ADAPTER	1
9	72423	1201-060	ELBOW, 900, 3/8	2
10	96906	MS51953-69	NIPPLE, 3/8 X 12	2
11	96906	MS51953-57	NIPPLE 3/8 X 3	3
12	72423	1641-060	UNION, 3/8	2
13	42423	ASTM-A120	PIPE, VENT,	1
14	72423	MS51953-59	NIPPLE 3/8 X 4	1
15	72423	MS51953-63	NIPPLE 6 IN.	1
16	72423	1203-060	ELBOW, STREET 3/8	1
17	72915	8472022	CHAIN, FUEL OIL CAP	1
18	90615	384A	FILLER, FUEL OIL	1
19	90615	83-4-470	TANK ASSEMBLY, FUEL	1
			END OF FIGURE	



4833-069.1

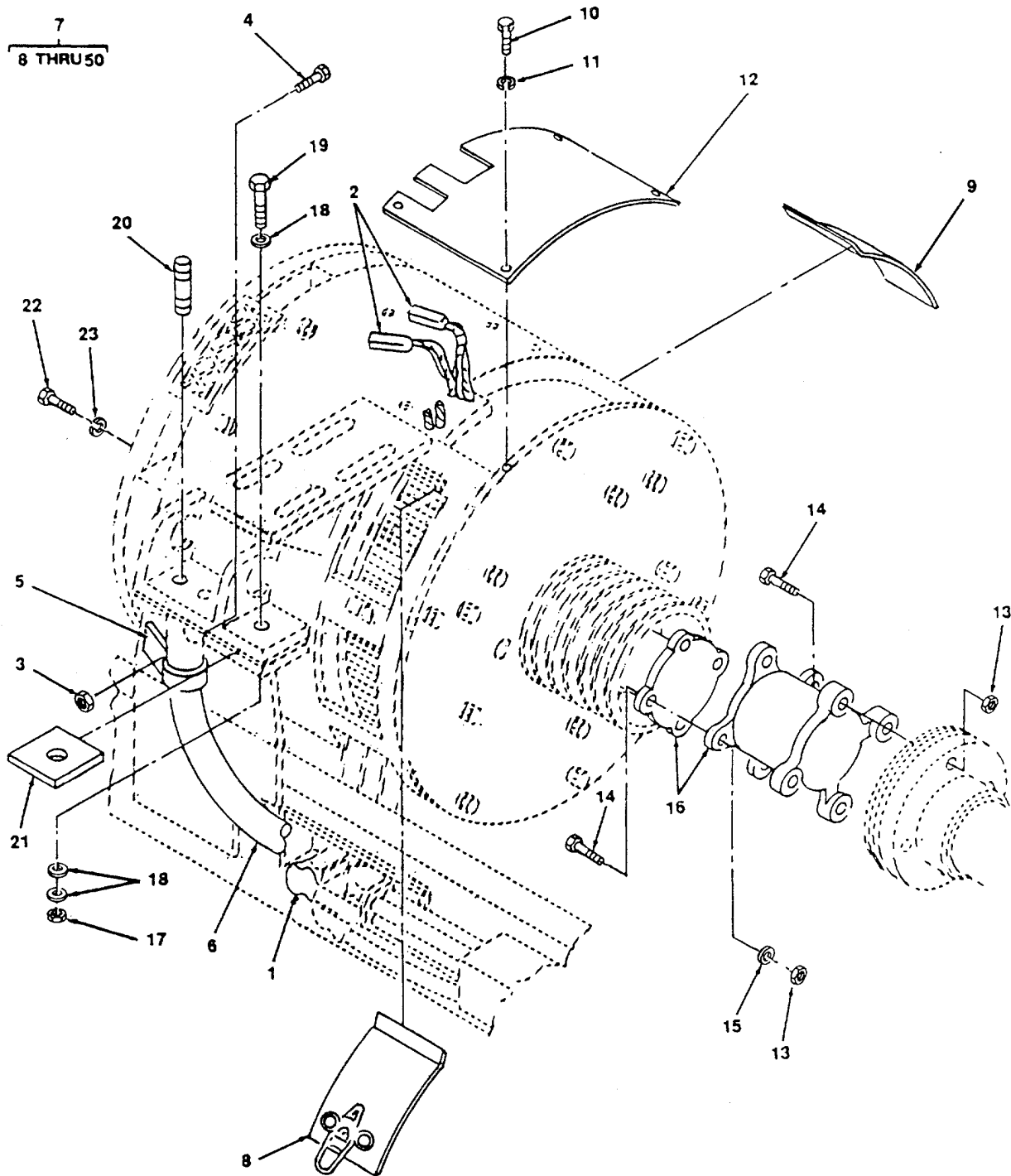


Figure 69. Generator, Main (Sheet 1 of 2).

4833-069.2

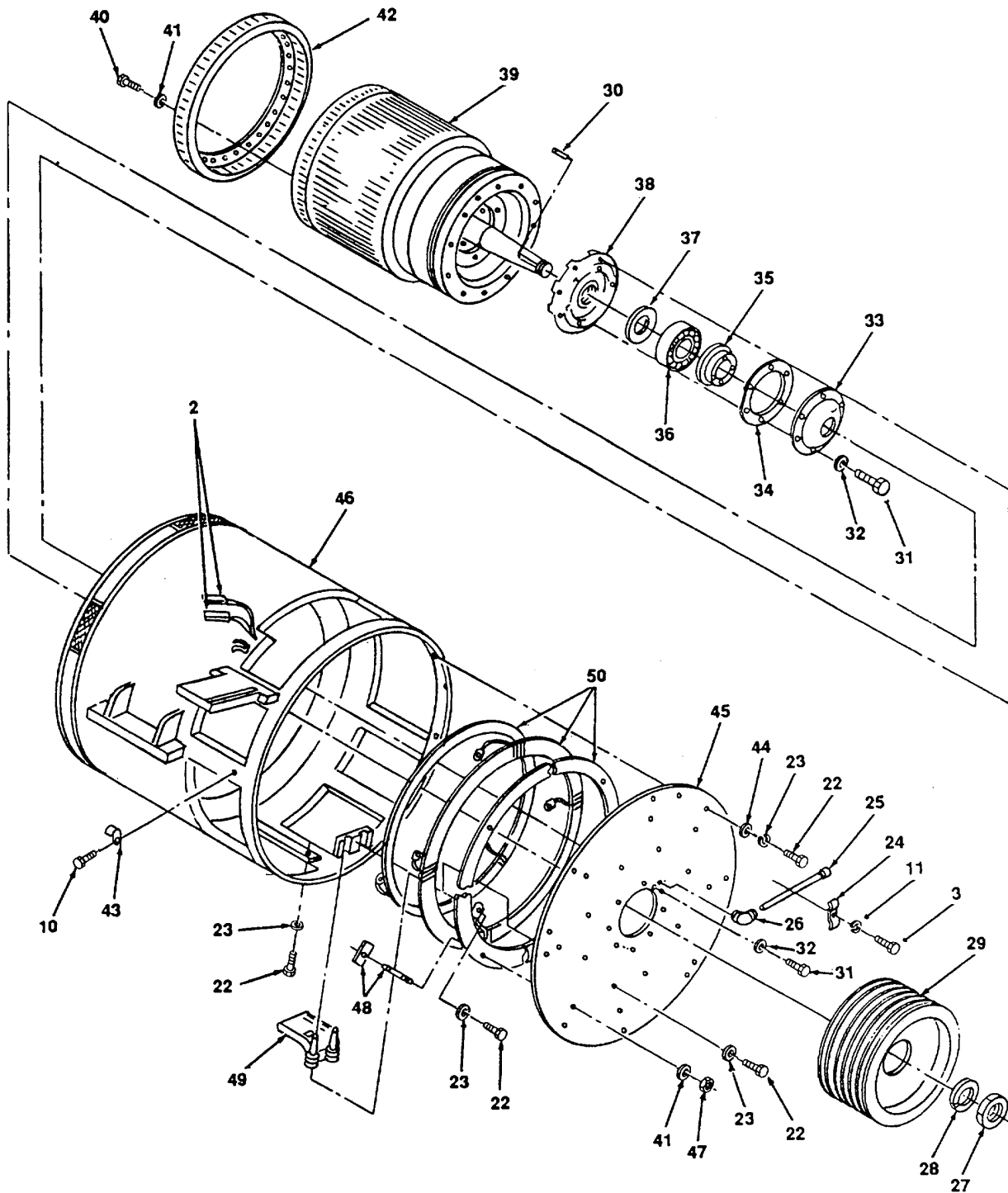
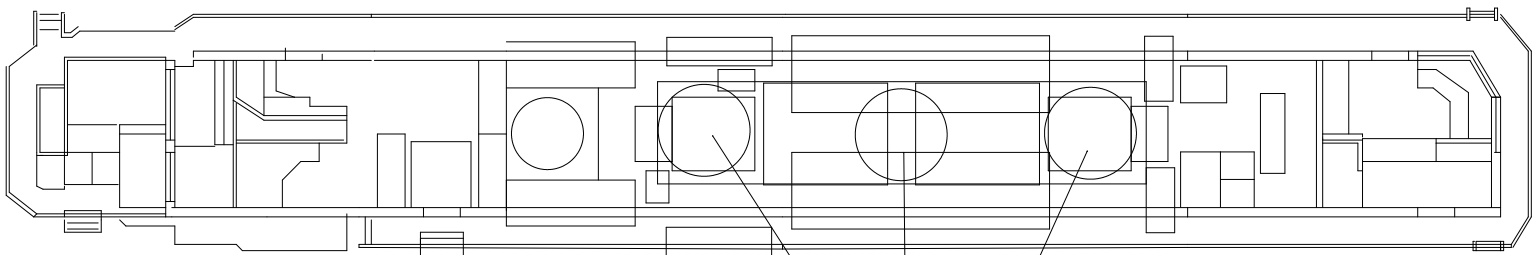


Figure 69. Generator, Main (Sheet 2 of 2).



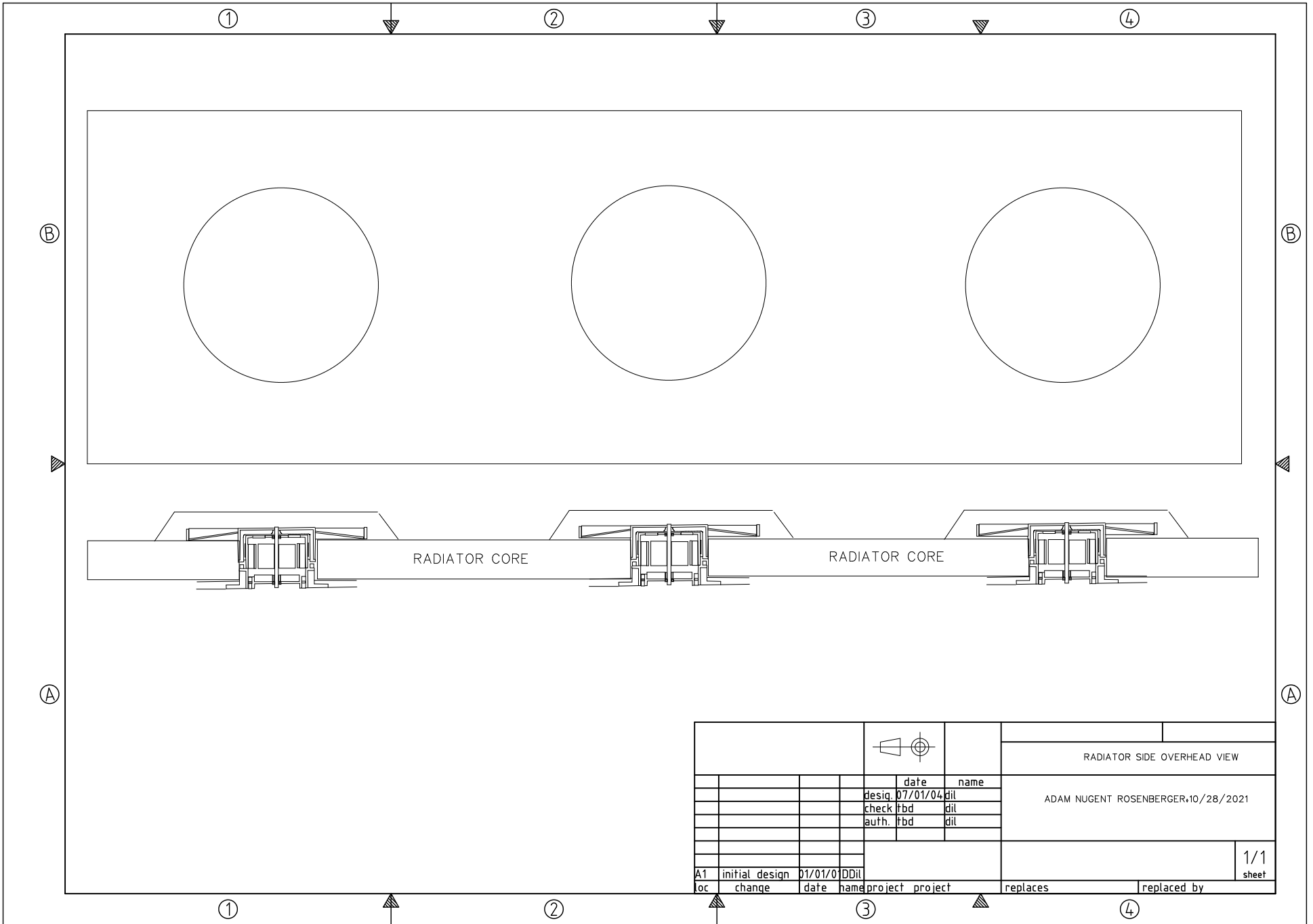
(1) ITEM NUMBER	(2) FSCM	(3) PART NUMBER	(4) DESCRIPTION AND USABLE ON CODE (UOC)	(5) QTY
			<b>GROUP 12 MAIN GENERATOR GROUP FIG. 69 GENERATOR, MAIN</b>	
1	72915		LEAD, ELECTRICAL, MADE FROM; WIRE, AWG, P/N (72915), TERMINAL, CONNECTOR, P/N 1593772 (79500)	6
2	72915		LEAD, ELECTRICAL, MADE FROM; WIRE, AWG, P/N (72915) AND TERMINAL, SPADE	6
3	96906	51967-03	BOLT, 1/4 IN.	1
4	96906	90725	SCREW, HEX-HEAD, 1/4 IN.	1
5	79500	13228E2148-48	CLAMP DOUBLE	1
6	09641	LA13	CONDUIT, ELECTRICAL	1
7	79500	1604C	GENERATOR, MAIN	1
8	79500	1612185	COVER, UH, W/LATCH	1
9	79500	1612184	COVER, R/H, W/LATCH	1
10	96906	MS90725	SCREW, HEX-HEAD, 1/4 IN.	1
11	96906	MS35338-44	WASHER, LOCK, 1/4 IN.	1
12	79500	1612186	COVER, COMMUTATOR TAP	2
13	96906	MS51967-21	NUT	8
14	96906	MS90725-165	SCREW, HEX-HEAD	8
15	79500		SPACER	4
16	79500		COUPLING, FLEXIBLE	1
17	96906	MS51967-24	NUT, 3/4 IN.	4
18	96906	MS27183-24	WASHERS, FLAT, 3/4 IN.	12
19	96906	MS907825-195	SCREW, HEX-HEAD, 3/4 X 4 IN.	6
20	79500		PIN, DOWEL 3/4 X 4 IN.	2
21	79500		SHIM	v
22	96906	MS90725-165	BOLTS, MOUNTING, 5/8 X 2 1/4 IN.	25
23	96906	MS35338-41	WASHERS, LOCK, 5/8 IN.	25
24	96906	13228E2148-34	CLAMP, 3/4 IN.	1
25	79500		TUBE, LUBRICATION	2
26	72423	1203-100	ELBOW, 90° STREET	2
27	96906	MS51967	NUT	6
28	96906	MS35338	WASHER, LOCK	6
29	96906	1421929	PULLEY	1
30	79500		KEY	1

(1) ITEM NUMBER	(2) FSCM	(3) PART NUMBER	(4) DESCRIPTION AND USABLE ON CODE (UOC)	(5) QTY
			<b>FIG. 69 GENERATOR, MAIN (CONT)</b>	
31	96906	MS90725-113	SCREW, 1/2X1 1/21N.	12
32	96906	MS35338-48	WASHER, LOCK	12
33	79500	1417339	CAP, BEARING	1
34	79500	1417340	GASKET, CAP	1
35	79500	1417341	SEAL, OUTERBEARING	1
36	79500	1297229	BEARING, ROLLER	1
37	79500	1417342	SEAL, INNER BEARING	1
38	79500		CARTRIDGE, BEARING	1
39	79500	1630996	ARMATURE	1
40	96906	MS90725-85	SCREW, HEX-HEAD, 7/16 X 1	16
41	96906	MS35338-47	WASHER, LOCK, 7/16	24
42	79500		FAN, ARMATURE	1
43	96906		CLIP	1
44	96906	MS27183-21	WASHER, FLAT, 5/8	16
45	79500		COVER, STATOR FRAME	1
46	79500		STATOR FRAME	1
47	96906	MS51967-12	NUT, 7/16	8
48	79500		CLAMP, T-BAR, 7/16 X 3 IN.	8
49	79500	1593937	HOLDER, BRUSH	8
50	79500		RING ASSEMBLY, GENERATOR	1
			END OF FIGURE	



RADIATOR

						RADIATOR	
				date	name	ADAM NUGENT ROSENBERGER, 10/21/2021	
				desig. 07/01/04	dil		
				check fbd	dil		
				auth. fbd	dil		
A1	initial design	01/01/0	DDil			1/1 sheet	
loc	change	date	name	project	project		



				RADIATOR SIDE OVERHEAD VIEW	
				date	name
				desig. 07/01/04	dil
				check fbd	dil
				auth. fbd	dil
A1	initial design	01/01/01	DD	dil	
loc	change	date	name	project	project
				replaces	replaced by
					1/1 sheet

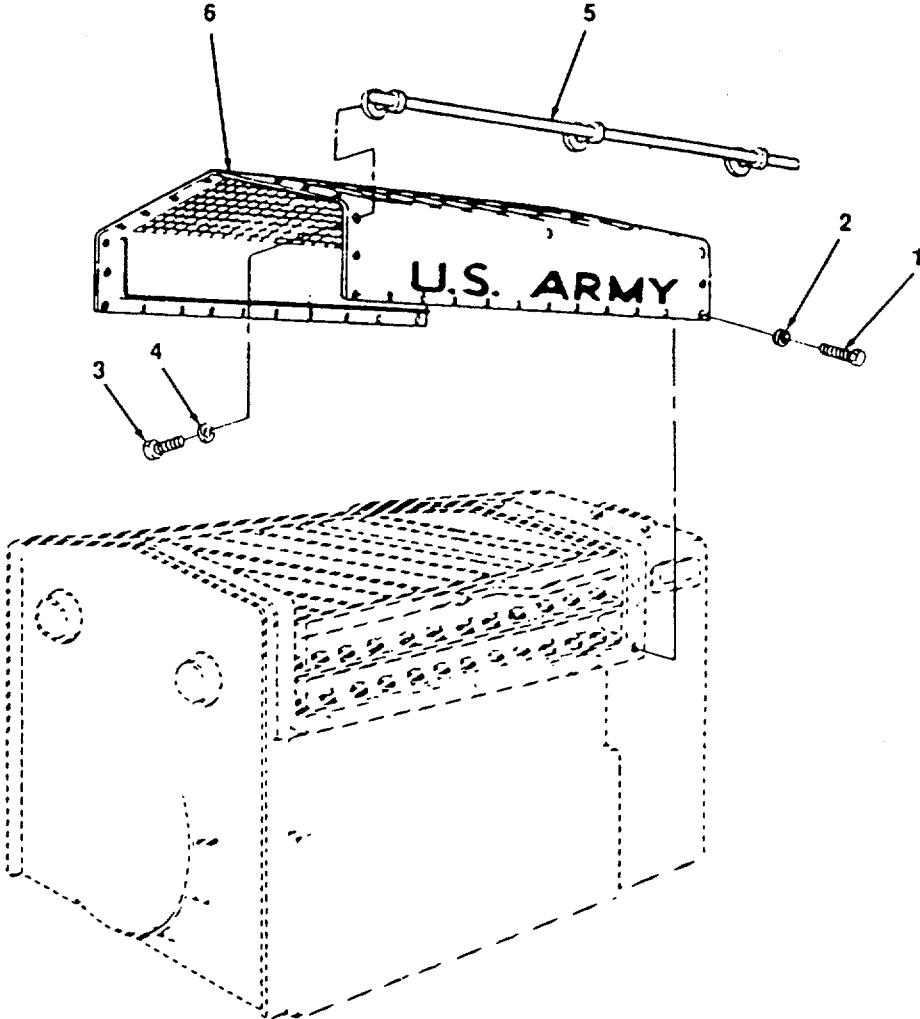
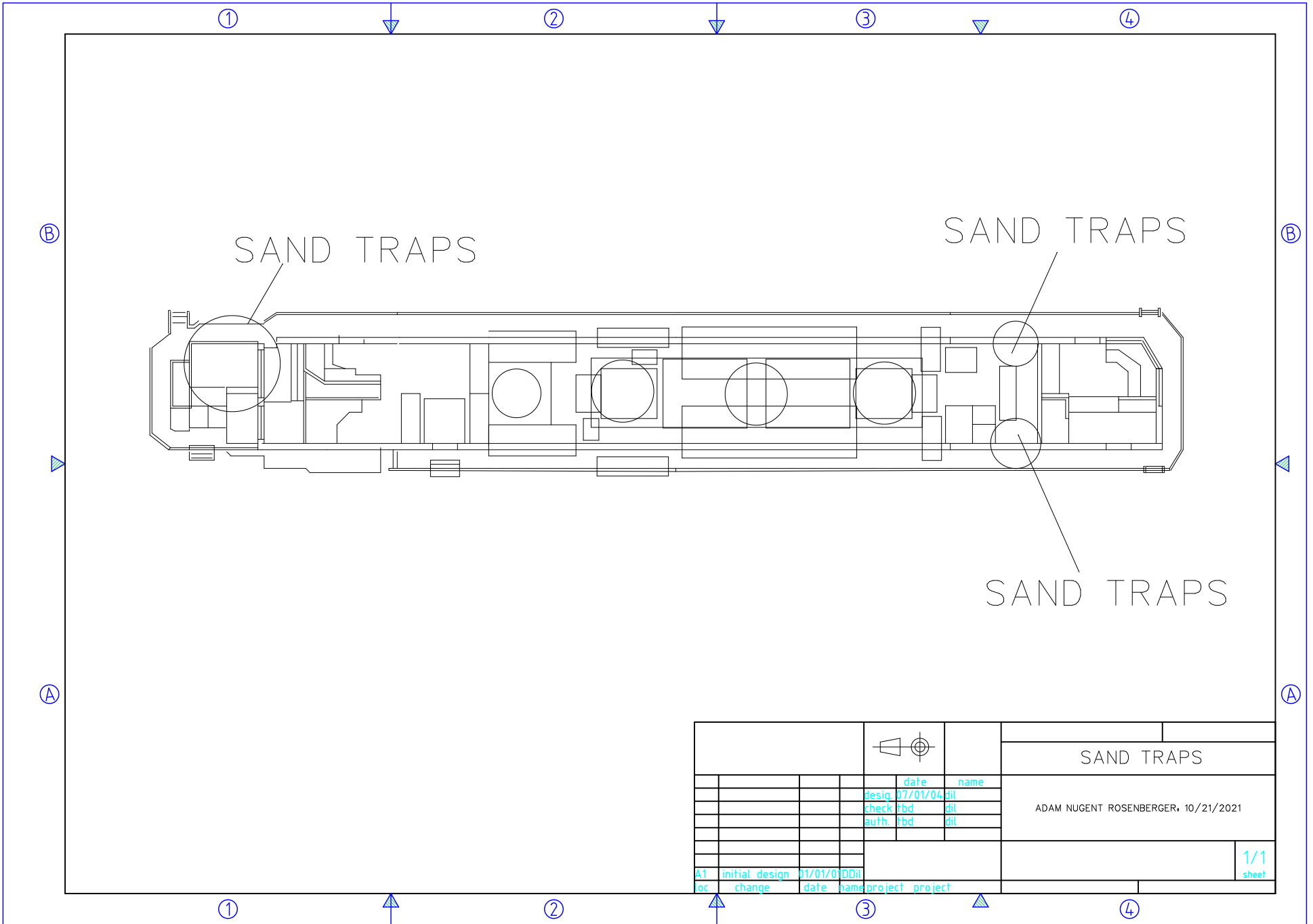


Figure 6. Radiator Hood and Handrail Assembly.

(1) ITEM NUMBER	(2) FSCM	(3) PART NUMBER	(4) DESCRIPTION AND USABLE ON CODE (UOC)	(5) QTY
			<b>GROUP 01 BODY GROUP</b>	
			<b>FIG. 6 RADIATOR, HOOD AND HANDRAIL ASSEMBLY</b>	
1	96906	MS90725-60	SCREW, HEX-HEAD, 3/8 X 1 IN.	40
2	96906	MS27183-14	WASHER, LOCK, 3/8 IN.	40
3	96906	MS90725-185	SCREW, HEX-HEAD, 3/4 X 1 1/2 IN.	8
4	96906	MS35338-51	WASHER, LOCK, 3/4 X 1 1/2 IN.	8
5	90615	53-3-130	HANDRAIL	2
6			HOOD, RADIATOR	1
			END OF FIGURE	



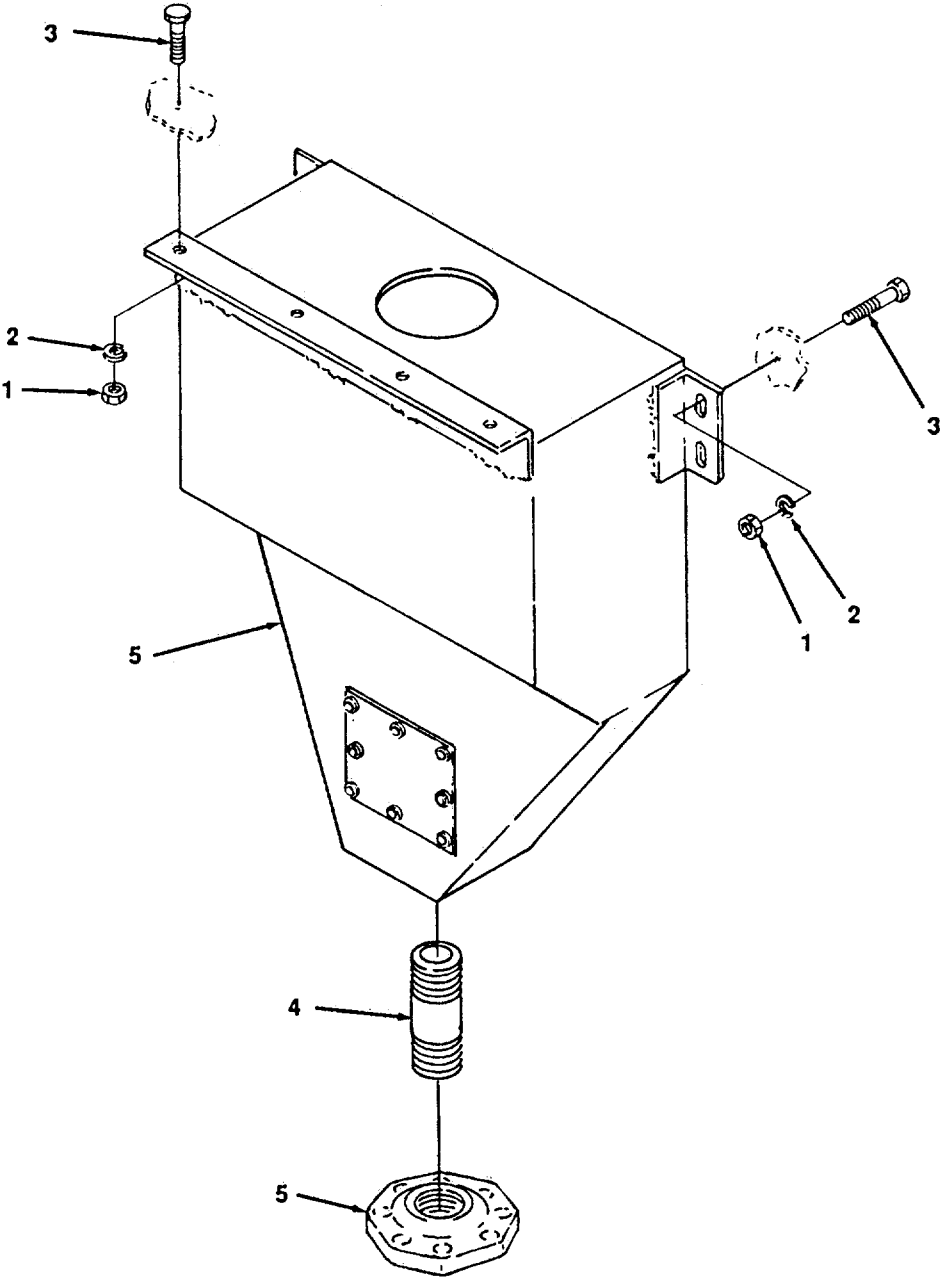
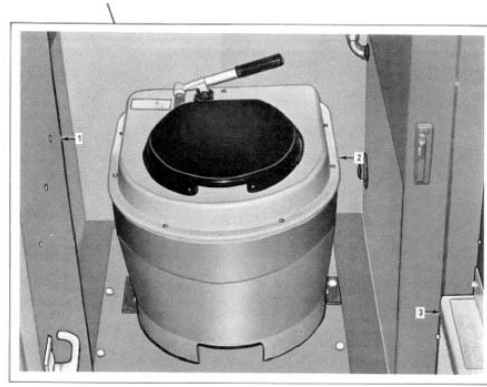
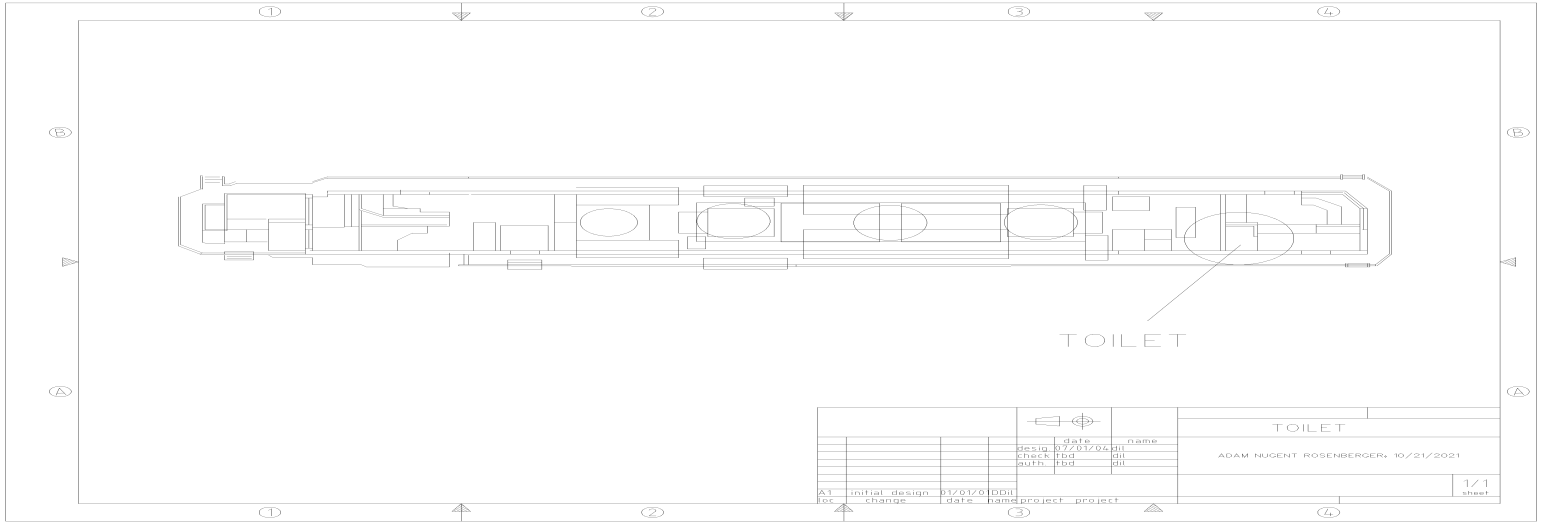


Figure 34. Sandbox.



(1) ITEM NUMBER	(2) FSCM	(3) PART NUMBER	(4) DESCRIPTION AND USABLE ON CODE (UOC)	(5) QTY
			<b>GROUP 07 SANDER GROUP</b>	
			<b>FIG. 34 SANDBOX</b>	
1	96906	MS51922-33	NUT, LOCK, 1/2 IN.	8
2	96906	MS35338-48	WASHER, LOCK	8
3	96906	MS90725-115	SCREW, CAP, 1/2 X 2 IN.	8
4	96906	MS51953-151	NIPPLE, 1 1/4 X 4 IN./WITH FLANGE	1
5	90615		SANDBOX ASSEMBLY	1
			END OF FIGURE	



REFERENCE	DESCRIPTION
1.	TOILET DOOR
2.	TOILET
3.	WATER COOLER

①

②

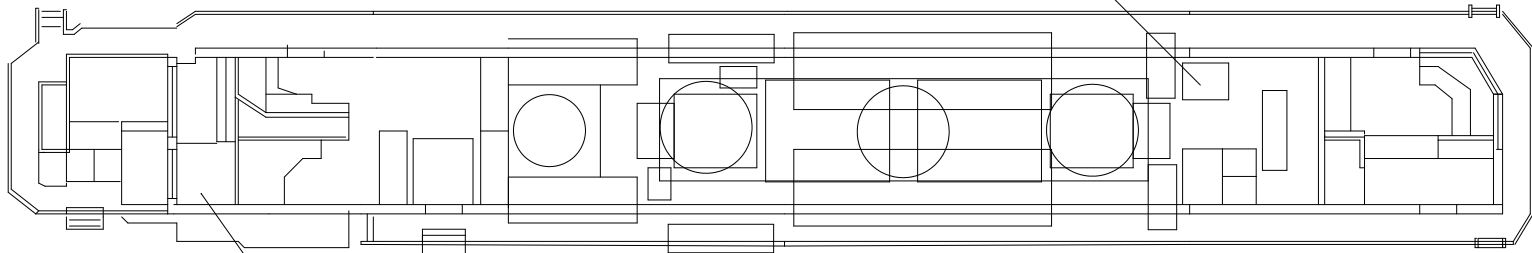
③

④

Ⓑ

Ⓑ

TRACTION MOTOR BLOWER



Ⓐ

Ⓐ

TRACTION MOTOR BLOWER

①

②

③

④

				TRACTION MOTOR BLOWER	
			date	name	
			desig.	07/01/04	dil
			check	fbd	dil
			auth.	fbd	dil
A1	initial design	01/01/0	DDil		
loc	change	date	name	project	project
					1/1 sheet

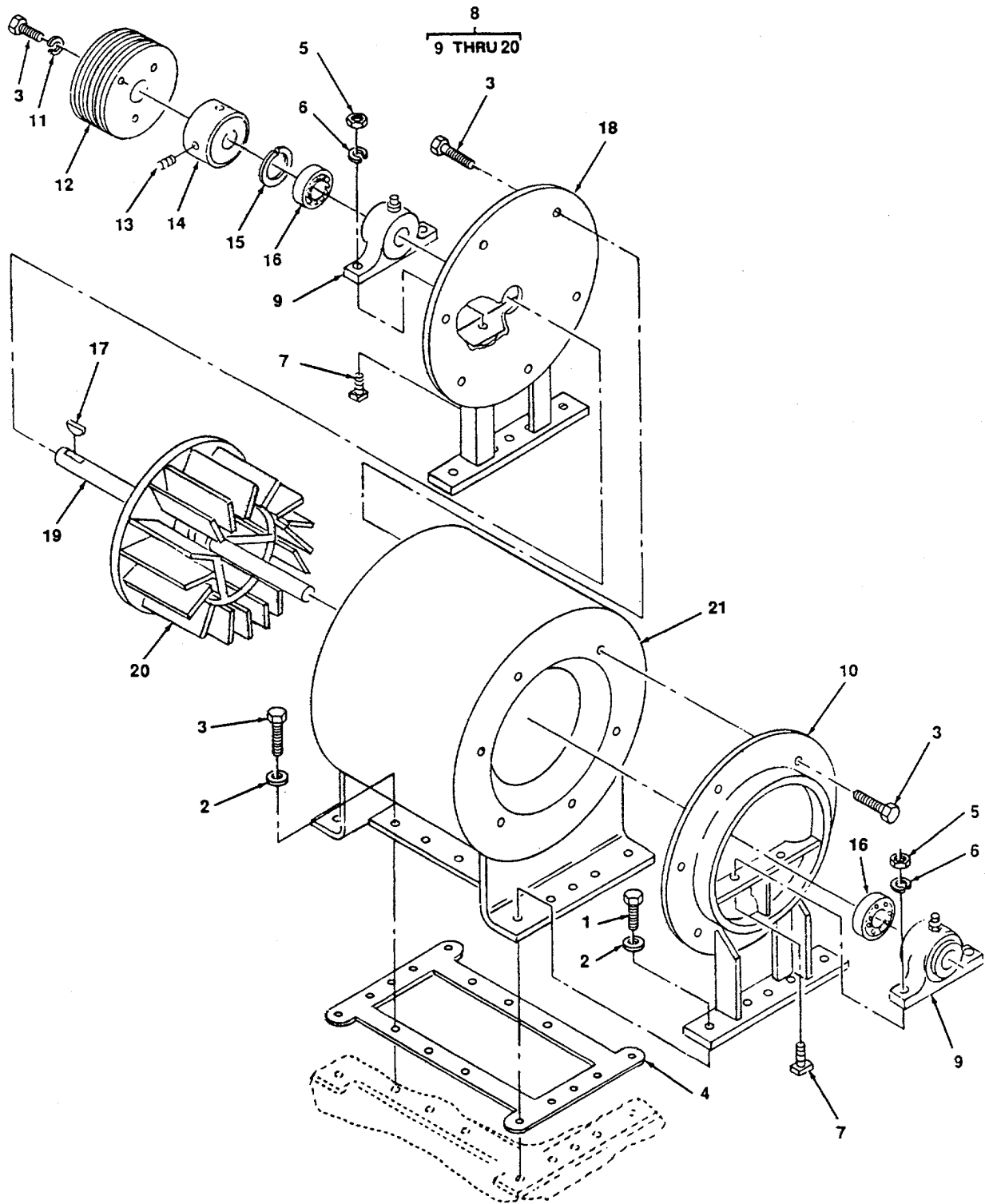


Figure 84. Blower, Traction Motor Assembly.

(1) ITEM NUMBER	(2) FSCM	(3) PART NUMBER	(4) DESCRIPTION USABLE ON CODE (UOC)	(5) QTY
			<b>GROUP 16 BLOWER TRACTION MOTOR GROUP</b>	
			<b>FIG. 84 BLOWER, TRACTION MOTOR ASSEMBLY</b>	
1	96906	MS90725-62	SCREW, HEX-HEAD, 3/8 X 1 1/4 IN.	10
2	96906	MS27183-14	WASHER, FLAT, 3/8 IN.	22
3	96906	MS90725-60	SCREW, HEX-HEAD, 3/8 X 1 IN.	27
4	96906		GASKET; MAKE FROM (NSN) 9320-00-241-9742)	1
5	96906	MS51967-15	NUT, 1/2	4
6	96906	MS35338-49	WASHER, LOCK, 1/2 IN.	4
7	96906	MS90725-109	SCREW, HEX-HEAD, 1/2 IN.	4
8	90615	67-3-1860	BLOWER ASSEMBLY, TRACTION MOTOR	1
9	90615	SA01-11-16	PILLOW BLOCK REAR	2
10	90615		COVER, REAR	1
11	96906	MS35338-46	WASHER, LOCK 3/8 IN.	3
12	90615	67-3-1790	SHEAVE, BLOWER DRIVE	1
13	90615		SCREW, SET, SOCKET	2
14	90615		SPACER	1
15	90615		RING, LOCK	1
16	21335	L207	BEARING, BALL ANNULAR	2
17	90615		KEY	1
18	90615		COVER, FRONT	1
19	90615	67-8-420	SHAFT, BLOWER	1
20	90615		BLOWER, FAN	1
21	90615		HOUSING, TRACTION MOTOR	1
			END OF FIGURE	

①

②

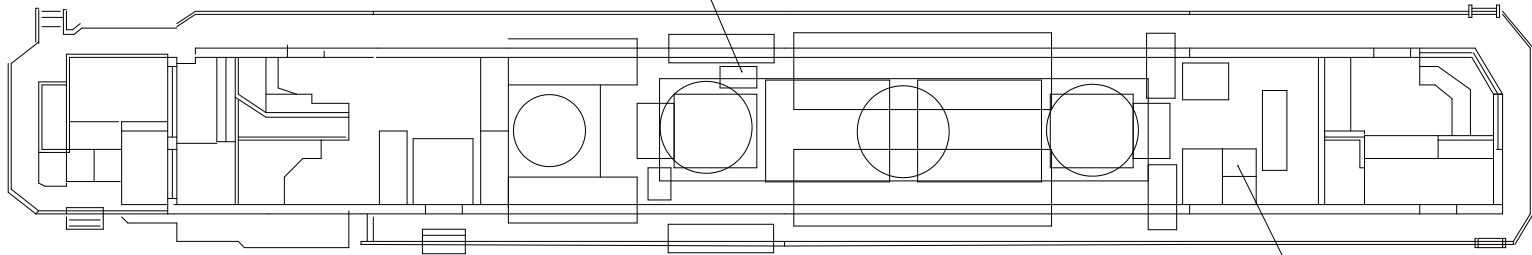
③

④

Ⓑ

Ⓑ

VOLTAGE REGUALTOR



VOLTAGE REGUALTOR

Ⓐ

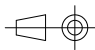
Ⓐ

①

②

③

④

						
					VOLTAGE REGUALTOR	
					ADAM NUGENT ROSENBERGER, 10/21/2021	
					1/1 sheet	
A1	initial design	01/01/01	DD	dit		
loc	change	date	name	project	project	



### 3-34. VOLTAGE REGULATOR (cont)

#### REMOVAL (cont)

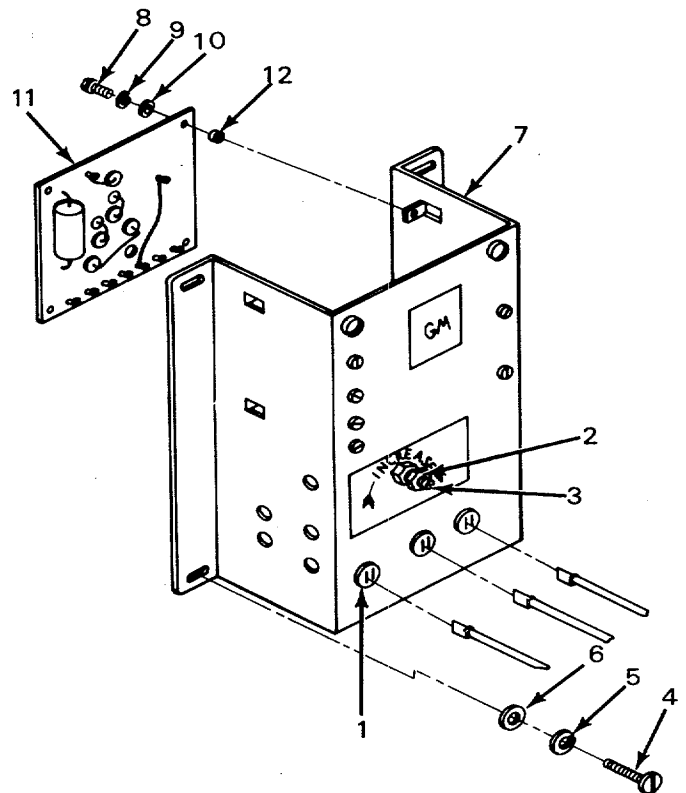
- Remove four screws (4), lockwashers (5), flat washers (6), and voltage regulator (7).

#### REPAIR

- Remove four screws (8), lockwashers (9), flat washers (10), panel control board (11), and four grommets (12). Tag and disconnect wires from panel control board.

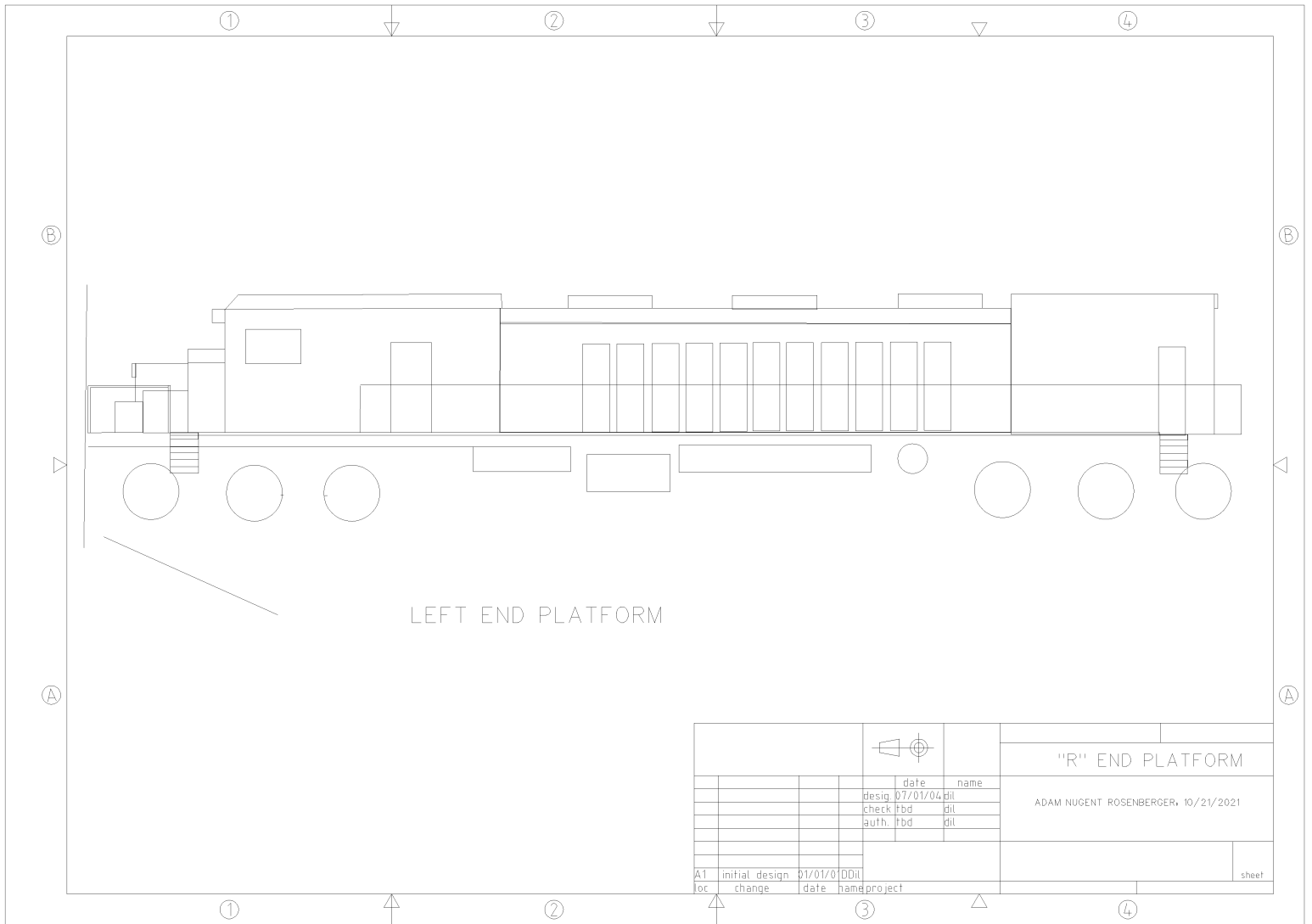
#### INSTALLATION

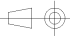
- Connect wires to panel control board and remove tags.
- Install four grommet (12). Position panel control board (11) and secure with four flat washers (10), lockwashers (9), and screws (8).
- Connect voltage regulator wires and perform voltage test in step 1 above. If reading of  $74 \pm 1$  volt is not obtained, remove control board, return board to stock, and perform step 8. If 74 volts  $\pm 1$  is obtained proceed to step 9-and continue with installation procedures.
- Tag and disconnect voltage regulator wires, and replace entire voltage regulator.
- Install voltage regulator (7) and secure with four flat washers (6), lockwasher (5), and screws (4).
- Connect voltage regulator wires in accordance with wiring diagram and remove tags.
- Loosen locking nut (2) and turn rheostat (3) to minimum reading.

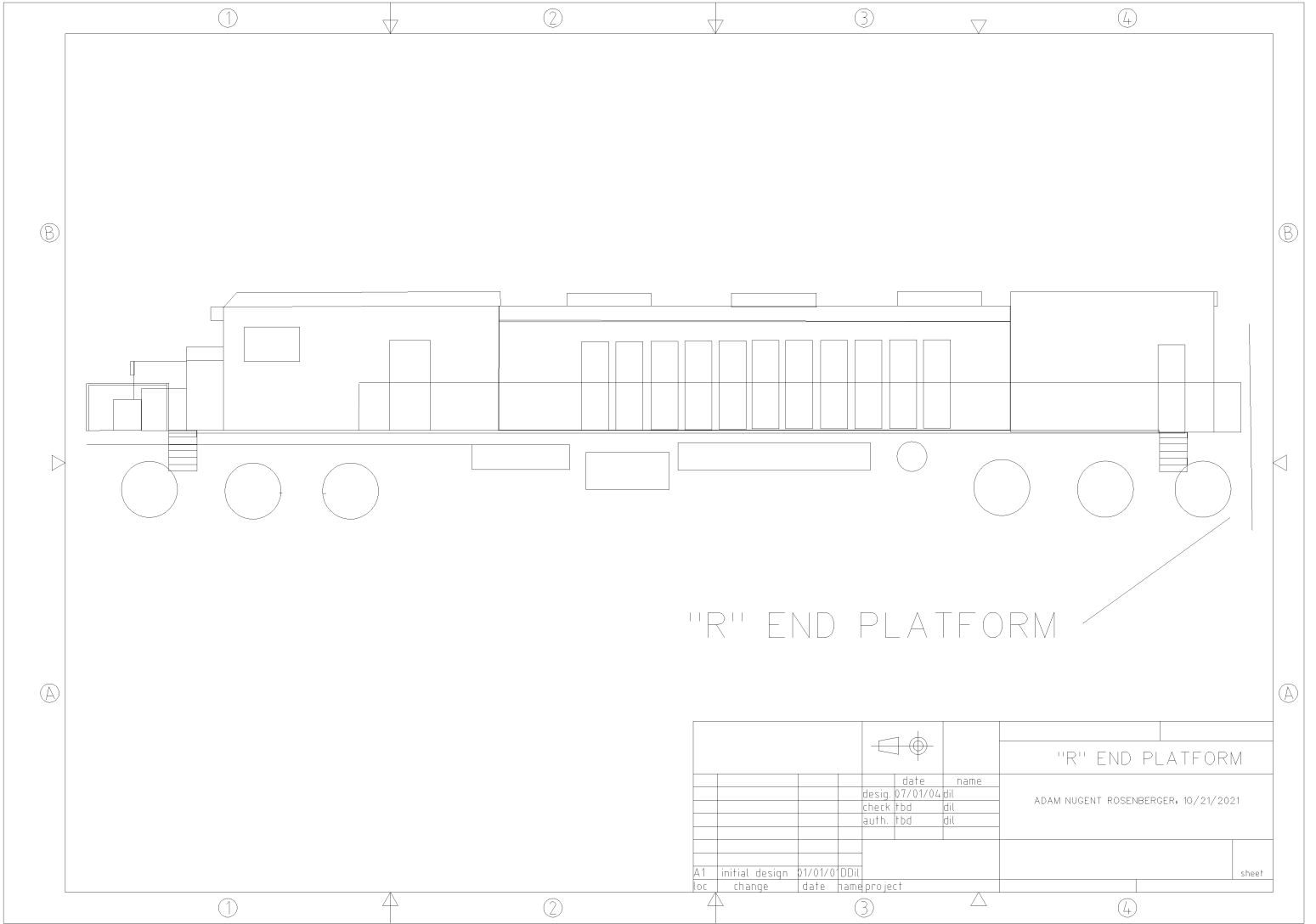


- Connect multimeter leads between positive side of charge fuse and negative side of battery switch.
- With engine running the multimeter reading should indicate between 62 and 70 volts.
- Place throttle in No. 8 position and adjust rheostat to maintain 74 volts. Allow components to warm up, and adjust voltage as necessary until constant 74-volt reading is attained. Lock rheostat (3) in place by tightening locking nut (2).
- Shut down engine. (TM 55-2210-223-12)





						
					"R" END PLATFORM	
					ADAM NUGENT ROSENBERGER, 10/21/2021	
			date	name		
			design	07/01/04	dit	
			check	fbd	dit	
			auth.	fbd	dit	
A1	initial design	01/01/0	DD	dit		
loc	change	date	name	project	sheet	



"R" END PLATFORM


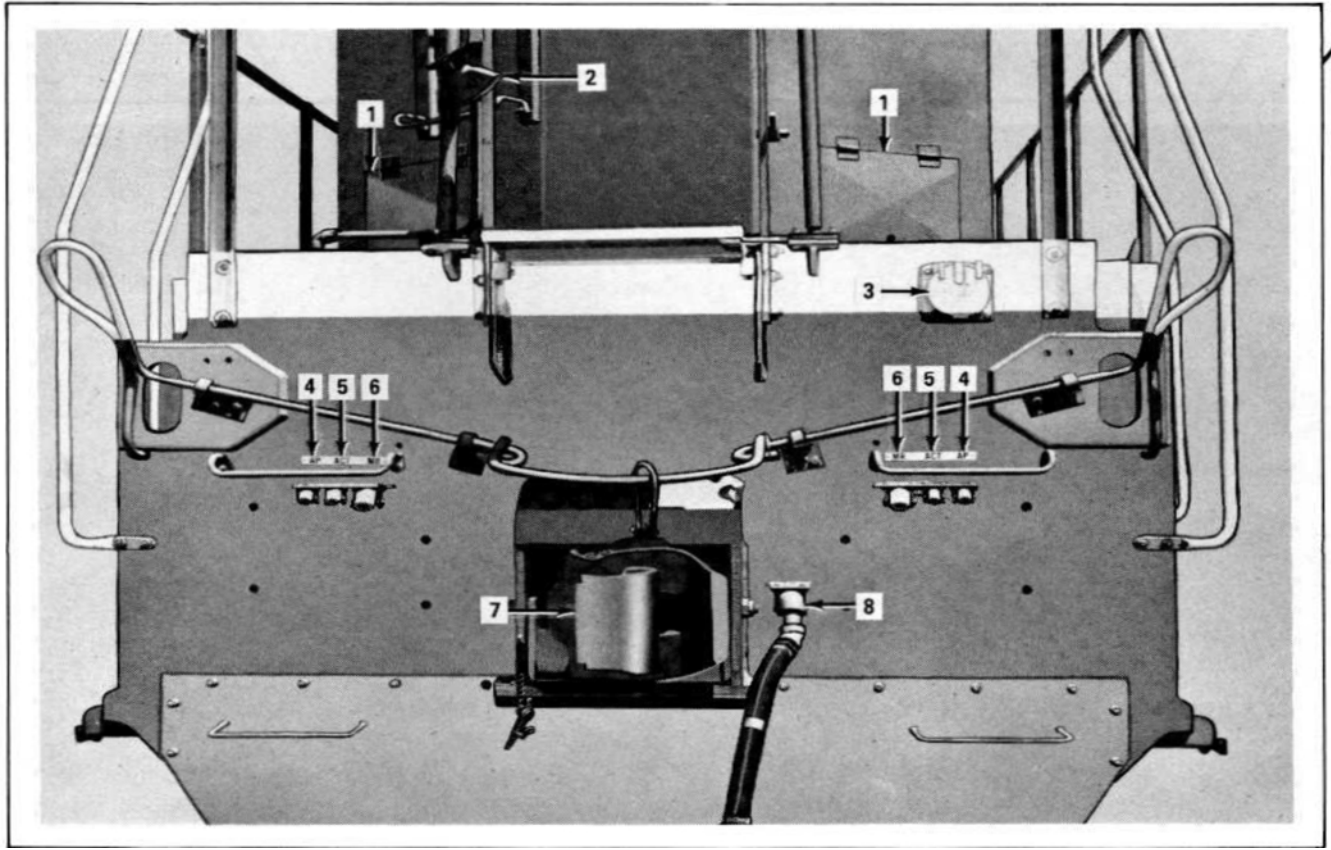
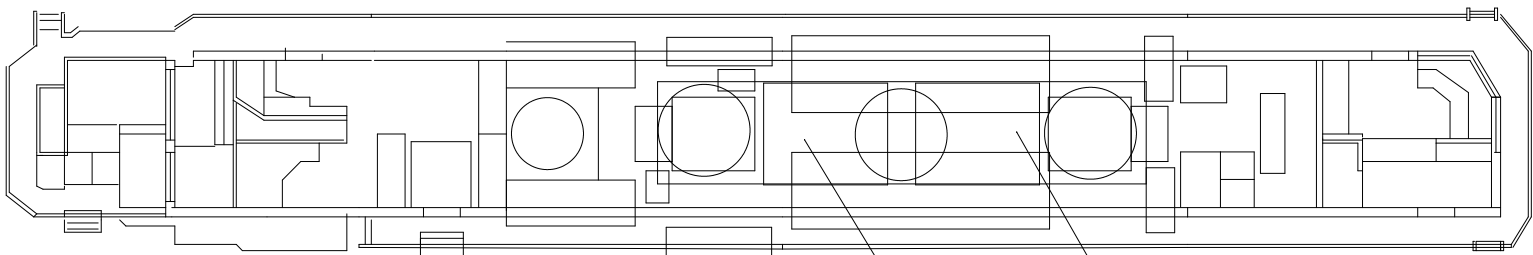
						
					"R" END PLATFORM	
					ADAM NUGENT ROSENBERGER, 10/21/2021	
			date	name		
			design	07/01/04	dit	
			check	fbd	dit	
			auth.	fbd	dit	
A1	initial design	01/01/0	DD	dit		
loc	change	date	name	project	sheet	

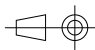
FIG. 17, E-31319



REF.	DESCRIPTION	CHECK	REF.	DESCRIPTION	CHECK
1	SANO BOX TRAP/CUT-OUT	POSITION	6	MAIN RESERVOIR PIPE	
2	CROSSWALK LIGHT	WORKS	7	COUPLER	CRACKS
3	MU RECEPTACLE	PINS	8	BRAKE PIPE HOSE	
4	APPLICATION PIPE				
5	ACTUATING PIPE				



NO.1 AND NO.2 DIESEL ENGINES

					
				NO.1 AND NO.2 DIESEL ENGINES	
				ADAM NUGENT ROSENBERGER, 10/21/2021	
				1/1 sheet	
A1	initial design	01/01/0	DDil		
loc	change	date	name	project	project