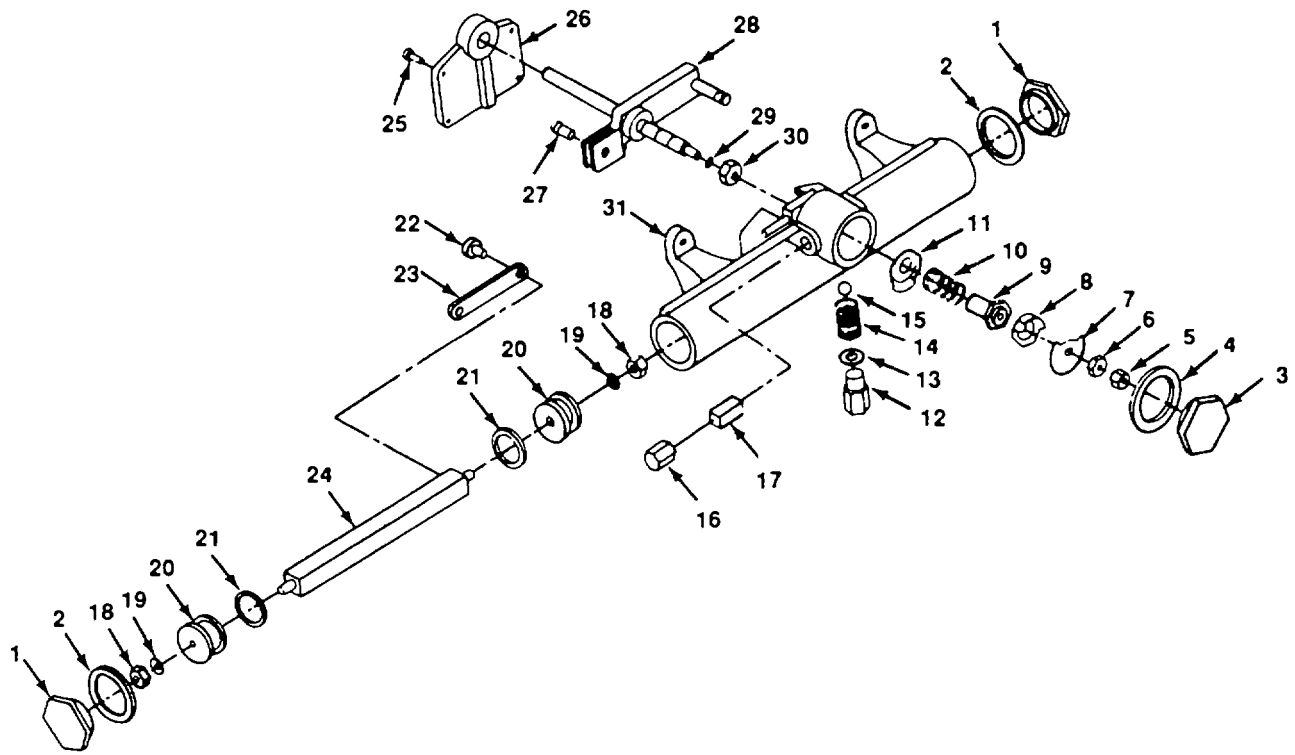


4834-008

Figure 8. Wiper Arm, Motor, Blades.

(1) ITEM NO.	(2) FSCM	(3) PART NUMBER	(4) DESCRIPTION AND USABLE ON CODE	(5) QTY
			GROUP 02 CAB GROUP	
			FIG. 8 WINDSHIELD WIPER MOTOR, BLADE AND ARM	
1	96906		SCREW, SET (NSN 5305-00-536-6897)	4
2	96906		PIN, COTTER, 1/16 X 1/2 AND PIN BAR (NSN 5315-00-815-1405)	2
3	82484	GC8-11 (11 IN)	WIPER ARM	2
3	82484	GC8-16 (16 IN)	WIPER ARM	2
4	82484	C1100-10	BLADE, 10 IN LONG	2
4	82484	C1100-14	BLADE, 14 IN LONG	2
5	96906	MS39166-3	NUT, 1/4 IN, HEX HD TUBE COUPLING	8
6	96906	MS35338-44	WASHER, LOCK, 1/4 IN	8
7	96906	MS51967-03	SCREW, CAP, 1/4-20 X 1 3/8	8
8			SPACERS, WOOD, 1 IN SQUARE	8
9	96906	MS13958-20	ADAPTER, STRAIGHT (NSN 4730-00-391-3771)	4
10	96906		VALVE, CUTOFF, 1/8 IN (NSN 4820-00-289-2143)	4
11	96906	MS51873-17	NIPPLE, PIPE, 1/4 X 6 IN.	4
			END OF FIGURE	



4834 009

Figure 9. Wiper Motor.

(1) ITEM NO.	(2) FSCM	(3) PART NUMBER	(4) DESCRIPTION AND USABLE ON CODE	(5) QTY
			GROUP 02 CAB GROUP	
			FIG. 9 WIPER MOTOR	
1	82484	C-650-M	ENDCAP	2
2	82484	C-452	GASKETS	2
3	82484		CAP AND CHAMBER	1
4	82484		GASKET	1
5	82484	C-526	LOCKNUT TIMER	1
6	82484	C-751	NUTTIMER	1
7	82484	C-750-DEG	TIMER	1
8	82484	C-752	TIMER REVERSER	1
9	82484		BEARING SLEEVE	1
10	82484	C-303	VALVE SPRING	1
11	82484	C-753-P	VALVE TIMER	1
12	82484	C-602	BALL HOUSING REVERSER	1
13	82484	C-451	GASKET	1
14	82484	C-304	BALL SPRING REVERSER	1
15	82484	C-401	BALL REVERSER	1
16	82484	C-525	EXHAUST NUT	1
17	82484	C-253	MUFFLER FELT	1
18	82484		NUT, HEX-HEAD	1
19	82484		LOCKWASHER	1
20	82484		O-RING RETAINER	2
21	82484		O-RINGS	2
22	82484		SCREW, MACHINE	1
23	82484		CONNECTING LINK	1
24	92484		CONNECTING ROD	1
25	82484		SCREWS	4
26	82484	GC-158 OR GC-162	BEARING PLATE BACK	1
27	82484	F-540	SCREW	1
28	82484	GSR-851-EL	TRANSMISSION	1
29	82484	C-603	SEAL, ROTARY	1
30	82484	C-513	BEARING, NUT SLEEVE	1
31	82484	MA-103-90GRC-851-5	BODY, WIPER MOTOR	1
			END OF FIGURE	