

## SECTION II

TM 55-2210-224-24P

(1) ITEM NO.	(2) FSCM	(3) PART NUMBER	(4) DESCRIPTION AND USABLE ON CODE	(5) QTY
			GROUP 16 AIR COMPRESSOR ASSEMBLY	
			FIG. 83 VALVE ASSEMBLY, DISCHARGE AND UNLOADER, LOW PRESSURE	
1	2K654	VB42202B	VALVE, DISCHARGE LOW PRESSURE ASSEMBLY	1
2	2K654	1VB42452	CLAMP, VALVE	1
3	2K654	VB118	NUT, ACORN	2
4	2K654	75K81	SCREW, FLAT-HEAD	1
5	2K654	VB42202	BUMPER	1
6	2K654	2VA105A	SPRING, VALVE	3
7	2K654	VB260	GUIDE, LIFT	2
8	2K654	1VB4267	DISC, VALVE	1
9	2K654	3VB42214	PLATE, DAMPENING	2
10	2K654	VB42164A	SEAT, VALVE	1
11	2K654	VB42164Z	VALVE, SUCTION UNLOADER, LOW PRESSURE ASSEMBLY	1
12	2K654	7A517	SCREW, CAP, HEX	2
13	96906		WASHER, STAR, INTERNAL (NSN 5310-00-167-0721)	2
14	2K654	8VB42194	CLAMP, VALVE	1
15	2K654	75LM7	SCREW, BUT, SO HD	1
16	2K654	VB706	RETAINER	1
17	2K654	60DD5	SEAL, ASM KAP	1
18	2K654	2VB42217	PLUNGER, UNLOADER	1
19	2K654	VB218	PINS, FINGER	4
20	2K654	78A394	SPRINGS	4
21	2K654	75K80	SCREW, FLAT-HEAD	1
22	2K654	VB42202	SEAT, VALVE SUCTION	1
			END OF FIGURE	

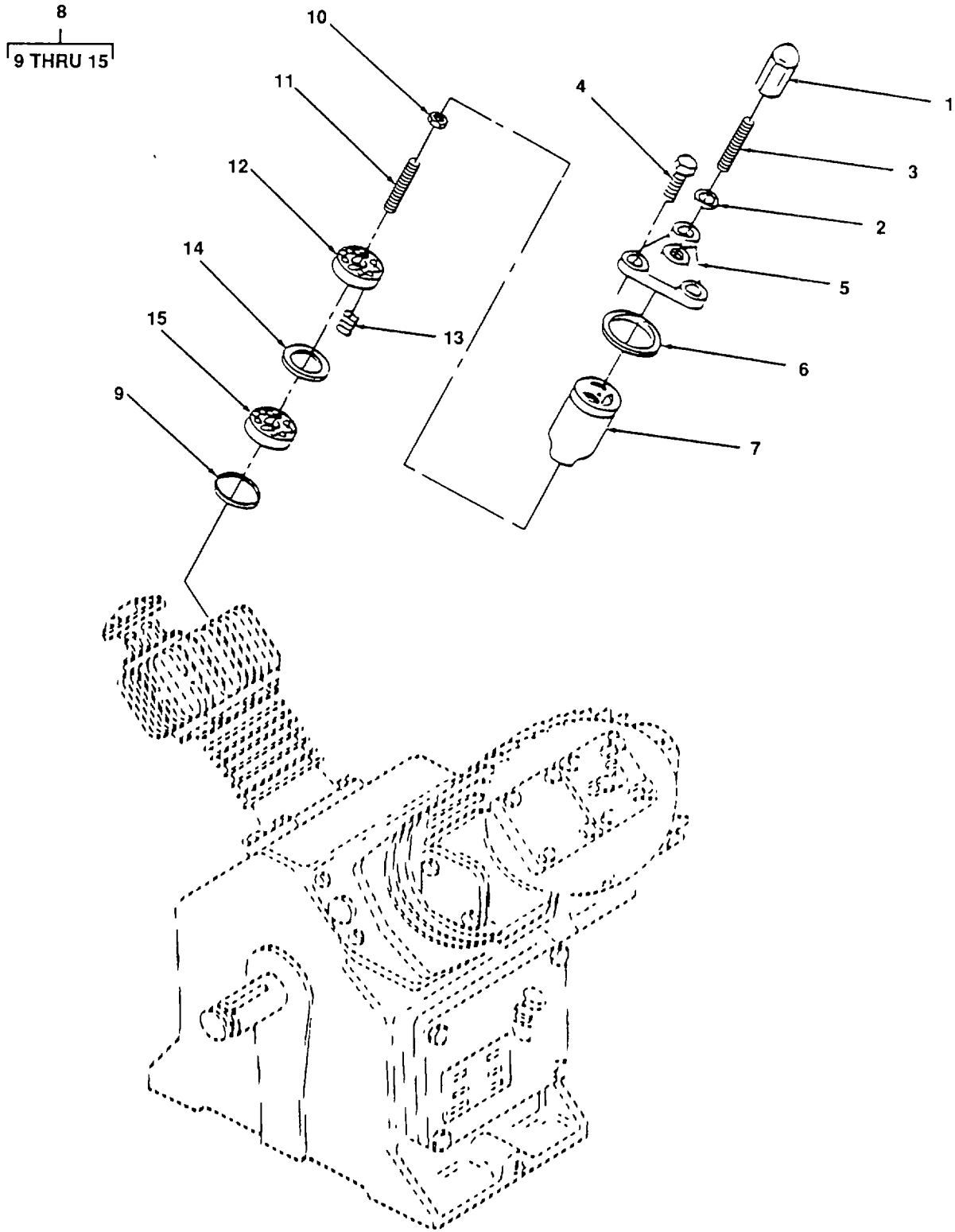


Figure 84. Valve, High Pressure Discharge.

## SECTION II

TM 55-2210-224-24P

(1) ITEM NO.	(2) FSCM	(3) PART NUMBER	(4) DESCRIPTION AND USABLE ON CODE	(5) QTY
			GROUP 16 AIR COMPRESSOR ASSEMBLY	
			FIG. 84 VALVE, HIGH PRESSURE DISCHARGE	
1	2K654	50Q17	NUT, ACORN	1
2	2K654	25F13	GASKET	1
3	2K654	76GG1	SCREW, SET	1
4	2K654	75A17	SCREW, CAP, HEX	3
5	2K654	ABL11	COVER, VALVE	1
6	2K654	25R1	GASKET, SEAT	1
7	2K654	5ABL194	CLAMP, VALVE	1
8	2K654	8YA127D	VALVE, HIGH PRESSURE DISCHARGE	1
9	2K654	25L3	GASKET, RING	1
10	2K654	VB118	NUT	1
11	2K654	VA207	SCREW, SET	1
12	2K654	ABL128	VALVE, BUMPER	1
13	2K654	78F4	SPRING, VALVE	3
14	2K654	90V3	DISC, VALVE	1
15	2K654	8YA127A	SEAT, VALVE	1
			END OF FIGURE	



## SECTION II

TM 55-2210-224-24P

(1) ITEM NO.	(2) FSCM	(3) PART NUMBER	(4) DESCRIPTION AND USABLE ON CODE	(5) QTY
			GROUP 16 AIR COMPRESSOR ASSEMBLY	
			FIG. 85 VALVE, HIGH PRESSURE SUCTION UNLOADER	
1	2K654	2ABL185	COVER, VALVE ASSEMBLY	1
2	72423	1201-060	ELBOW, 900	1
3	2K654	75A34	SCREW, CAP	6
4	2K654	1WAU274	CAP, DIAPHRAGM	1
5	2K654	2AAB215	DIAPHRAGM	1
6	2K654	3ABL467	PLUNGER, UPPER UNLOADER	1
7	2K654	75A17	SCREW, CAP	3
8	2K654	50Q13	NUT, ACORN	3
9	2K654	25F15	GASKET	3
10	2K654	76G55	SCREW, SET	3
11	2K654	2ABL185	COVER, VALVE	1
12	2K654	78A126	SPRING, UPPER PLUNGER UNLOADER	1
13	2K654	25P4	GASKET, SEAT	1
14	2K654	6ABL194	CLAMP, VALVE	1
15	2K654	1ABL217	PLUNGER, UNLOADER LOWER	1
16	2K654	50E4	NUT, HEX CASTLE	1
17	2K654	62E3	PIN, COTTER	1
18	2K654	78A124	SPRING, LOWER PLUNGER	1
19	2K654	ABL164R	VALVE, HIGH PRESSURE SUCTION UNLOADER	1
20	2K654	75D4	SCREW, CAP, HEX-HEAD	1
21	2K654	ABL202	SEAT, VALVE	1
22	2K654	90V3	DISC, VALVE	1
23	2K654	78F4	SPRING, VALVE	3
24	2K654	ABL164X	VALVE, BUMPER	1
25	2K654	25L3	GASKET, RING VALVE SEAT	1
			END OF FIGURE	