

Figure 153. Traction Motor (Sheet 1 of 3).

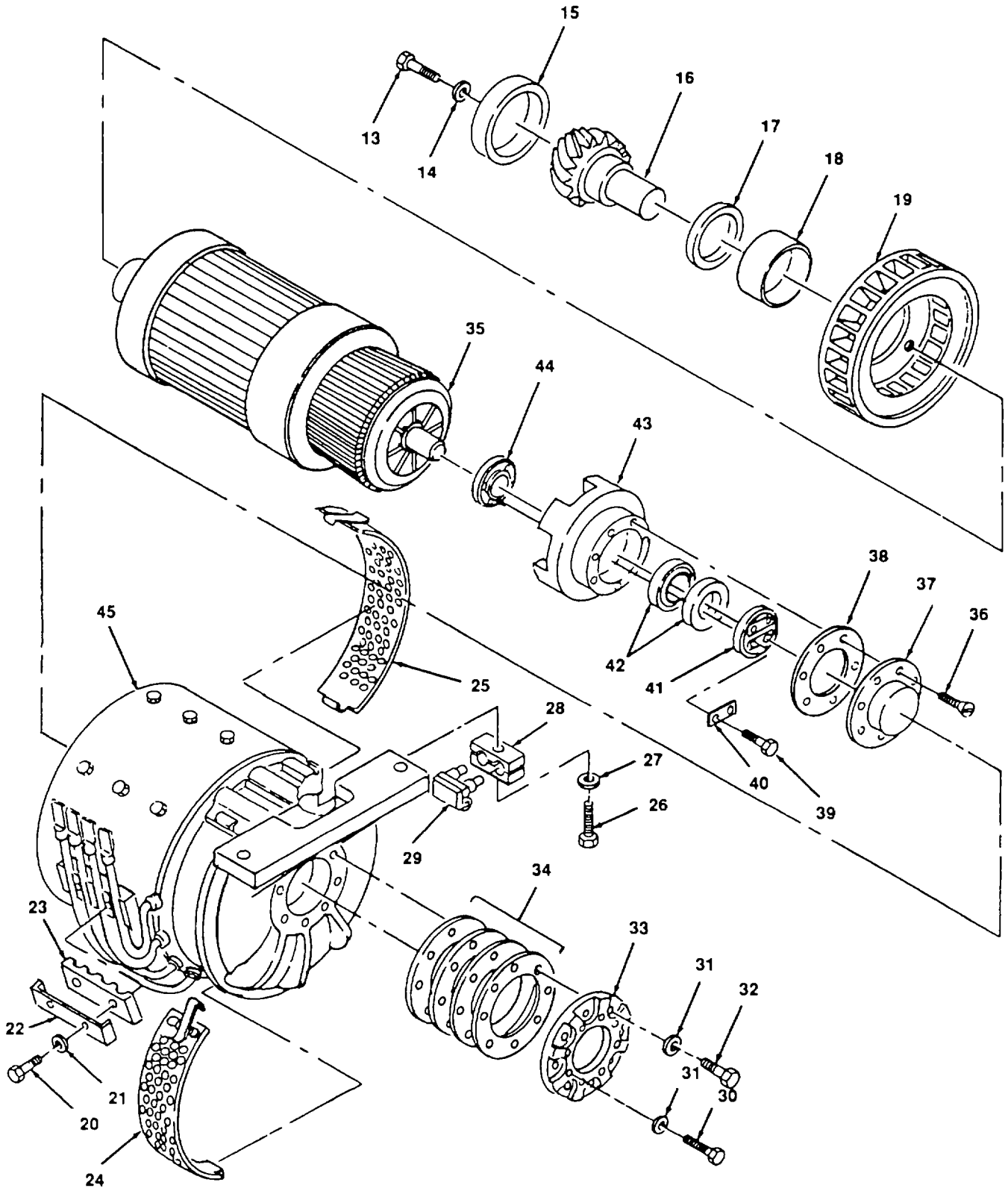


Figure 153. Traction Motor (Sheet 2 of 3).

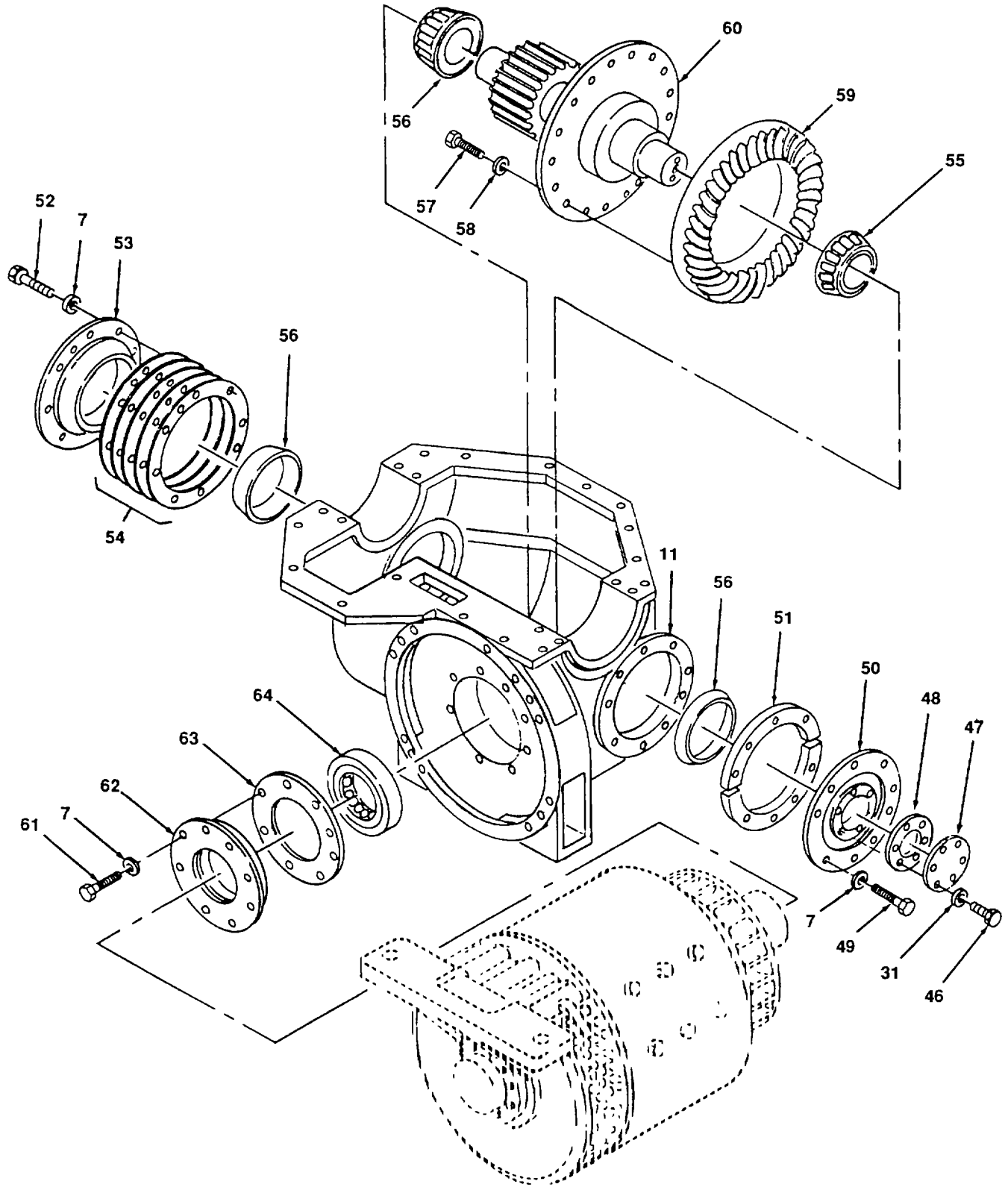


Figure 153. Traction Motor (Sheet 3 of 3).

SECTION II

TM 55-2210-224-24P

(1) ITEM NO.	(2) FSCM	(3) PART NUMBER	(4) DESCRIPTION AND USABLE ON CODE	(5) QTY
			GROUP 21 TRACTION MOTOR	
			FIG. 153 TRACTION MOTOR AND GEAR UNIT	
1	24446	14547	PIN, COTTER	2
2	24446	270641	NUT	2
3	24446	8816910	WASHER, FLAT	2
4	24446	9962139G1	PAD ASSEMBLY	2
5	24446	8869918P29	BOLT, HEX-HEAD	2
6	24446	8806102P1	SCREW, HEX-HEAD, OIL PAN TO GEAR BOX, 5/8-11 NC	12
7	96906	MS35338-50	WASHER, LOCK, 5/8	116
8			PAN, OIL HYPOID	2
9	24446	220105	SCREW, HEX-HEAD, GEAR BOX TO MOTOR, 3/4-10 NC	48
10	96906	MS35338-51	WASHER, LOCK, 3/4 IN	48
11	80971	7GA22C1	UNIT, GEAR	4
12	24446	SGE747D2	TRACTION MOTOR	4
13	24446	6709888P1	SCREW, MACHINE PINION TO ARMATURE SHAFT, 3/4-16 NC	4
14	24446	6709884P1	WASHER, PINION BOLT, 3/4 IN	4
15			SLINGER, OIL	4
16			PINION, HYPOID	4
17	24446	6709832P1	COLLAR, SPACER BEARING TO PINION	4
18			RACE, BEARING	4
19			FAN, BLOWER TRACTION MOTOR	4
20			SCREW, HEX-HEAD	8
21			WASHER, LOCK	8
22			CLAMP, WIRE BRACKET	4
23			BRACKET, WIRE	4
24	24446	6744392G2	COVER, COMMUTATOR INSPECTION WITH CLAMPING LEVER, L.H	4
25	24446	6744392G1	COVER, COMMUTATOR INSPECTION WITH CLAMPING LEVER, R H	4
26			SCREW, HEX-HEAD	16
27			WASHER, LOCK	16
28			CLAMP, BRUSH HOLDER	16
29	24446		BRUSH ASSEMBLY (SEE FIG 112 FOR BREAKDOWN)	4

SECTION II

TM 55-2210-224-24P

(1) ITEM NO.	(2) FSCM	(3) PART NUMBER	(4) DESCRIPTION AND USABLE ON CODE	(5) QTY
			FIG. 153 TRACTION MOTOR AND GEAR UNIT (CONT)	
30	96906	MS90725	SCREW, HEX-HEAD, 3/8-16 UNC	32
31	96906	MS35338-46	WASHER, LOCK, 3/8 IN	56
32	96906	MS90725	SCREW, HEX-HEAD, 5/8-11 UNC	32
33	24446	493A374PT1	PLATE, END, COMMUTATOR END	4
34			SHIMS, END PLATE, COMMUTATOR	
35	24446	6756899G1	ARMATURE, TRACTION MOTOR W/COMMUTATOR SHAFT AND FAN	4
36			SCREW, FLAT HEAD, SLOTTED	16
37	15434	334B309PT1	CAP, BEARING, COMMUTATOR END	4
38	24446	186V855PT1	GASKET, END CAP COMMUTATOR	4
39			SCREW, HEX-HEAD	16
40			BAR, LOCK TAB	8
41	60969	189V441 P1	PLATE, CLAMP, COMMUTATOR END	4
42	24446	8864950PT129	BEARING, BALL, COMMUTATOR END	8
43	15434	334B274PT1	HOUSING, BEARING SEAL, COMMUTATOR END	4
44	24446	493A384PT1	COLLAR, BEARING SEAL, COMMUTATOR END	4
45			HOUSING, MOTOR	4
46	24446	234483	SCREW, HEX-HEAD, BEARING HOUSING COVER	24
47			PLATE, COVER	4
48	24446	8806076P1	GASKET, COVER, BEARING HOUSING, GEAR END (NSN 5330-366-1607)	4
49	24446	98X25	SCREW, HEX-HEAD, BEARING HOUSING TO GEAR BOX 5/8-11 NC	36
50			HOUSING, BEARING	4
51			SPACER, SPLIT, BEARING HOUSING	4
52	96906	MS90725-163	SCREW, HEX-HEAD, BEARING HOUSING TO GEAR BOX, 5/8-11 NC X 1 3/4 IN LONG	36
53			HOUSING, BEARING	4
54	80971	8828025P1	SHIM, BEARING HOUSING, 0 003 IN THICK	V
	24446	8828025P23	SHIM, BEARING HOUSING, 0 005 IN THICK	V
	24446	8828025P2	SHIM, BEARING HOUSING, 0 007 IN THICK	V
	24446	8828025P4	SHIM, BEARING HOUSING, 0 025 IN THICK	V
	24446	6709830P4	SHIM, BEARING HOUSING, 0 063 IN THICK	V
55	24446	8864953P22	BEARING, ROLLER, TAPERED W/CONE AND CUP, PINION END	4

(1) ITEM NO.	(2) FSCM	(3) PART NUMBER	(4) DESCRIPTION AND USABLE ON CODE	(5) QTY
56	24446	8864953P22	FIG. 153 TRACTION MOTOR AND GEAR UNIT (CONT) BEARING, ROLLER, TAPERED W/CONE AND CUP, GEAR END	4
57	24446	6709856P1	SCREW, HEX-HEAD, 3/4-16 NC	72
58	24446	8806056P1	WASHER, HUB MTG SCREW, 3/4 IN	72
59	24446	153X5	GEAR, RING AND PINION SET, HYPOID RING, 49 TEETH, PINION; 10 TEETH	4
60	24446	6744394G7	SHAFT, REDUCTION GEAR INCL PINION AND HUB	4
61	24446	6744394G7	SCREW, HEX-HEAD AP BEARING CAP TO GEAR BOX, 1/2° 18 NC X 1/2 IN. LONG	72
62	24446	6733789G1	CAP, ROLLER BEARING, W/LUBRICANT FLINGER (NSN 2240-366-1600)	4
63	24446	6709833P1	GASKET, BEARING CAP TO GEAR BOX	4
64	62679	NU32OW23	BEARING, CYLINDRICAL ROLLER PINION	4
<p style="text-align: center;">NOTE</p> <p style="text-align: center;">Assure bearing is manufactured specifically for traction motor use.</p> <p style="text-align: center;">END OF FIGURE</p>				