

4834-036 1

Figure 36. Switches (Sheet 1 of 2).

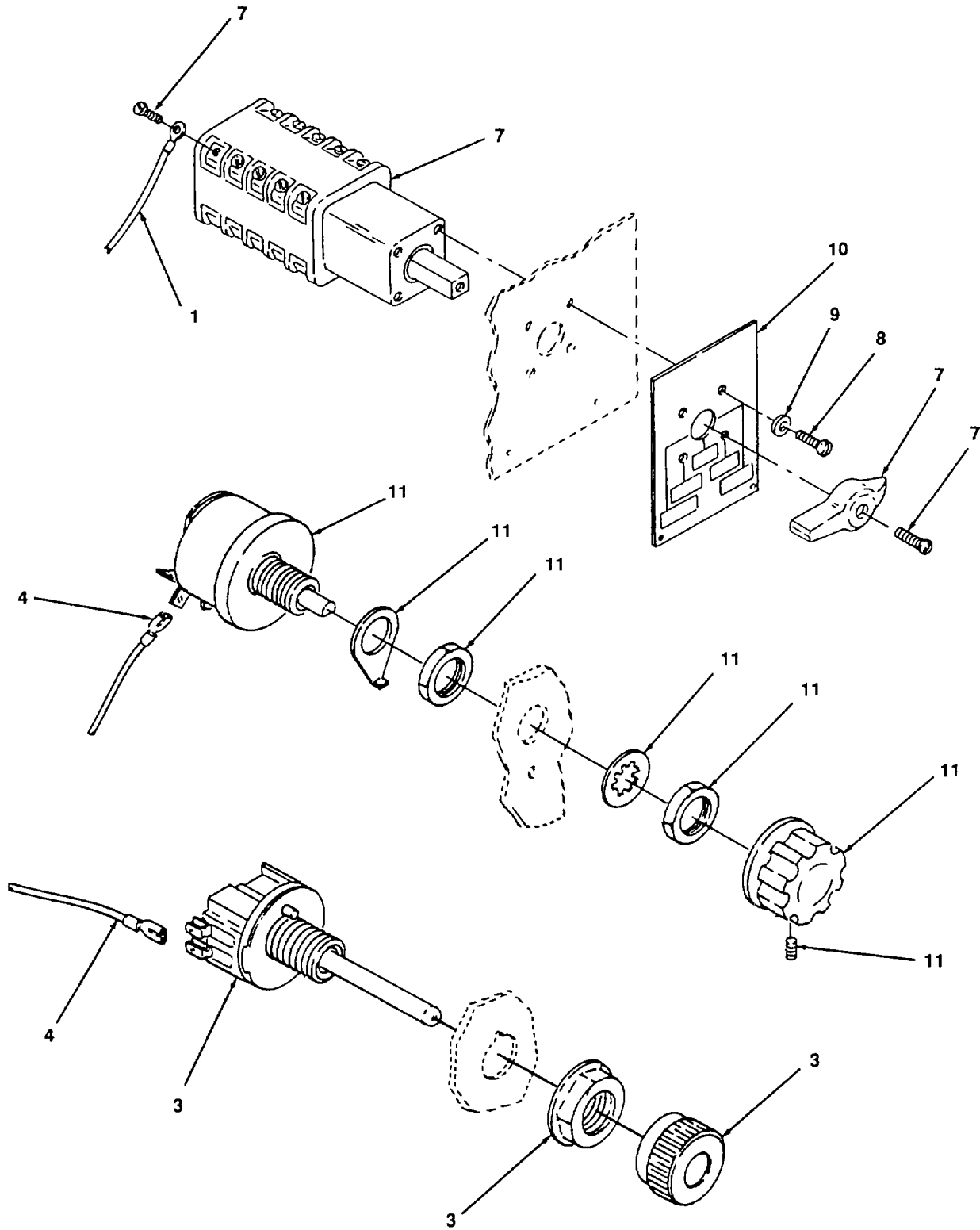
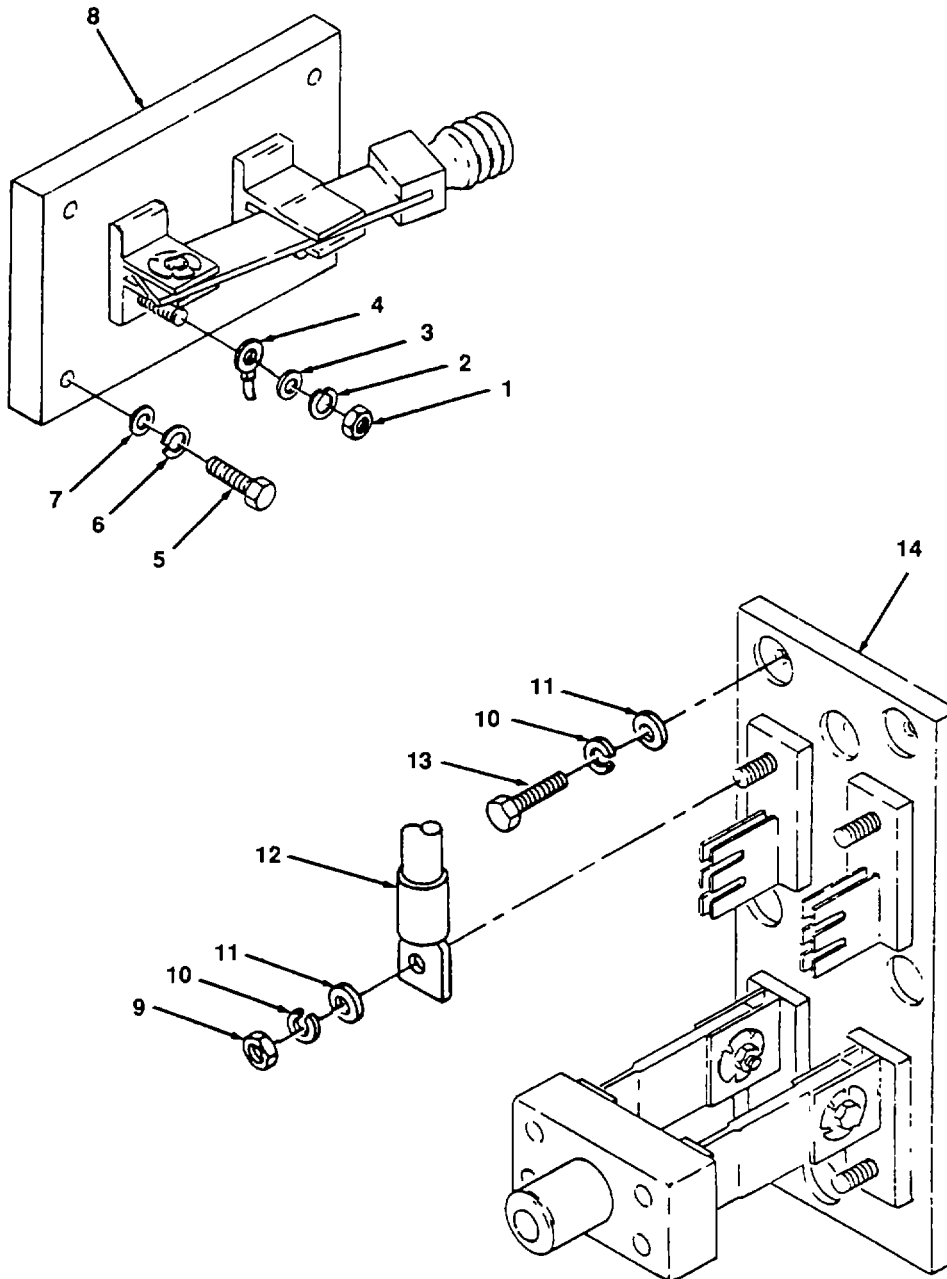


Figure 36. Switches (Sheet 2 of 2)

(1) ITEM NO.	(2) FSCM	(3) PART NUMBER	(4) DESCRIPTION AND USABLE ON CODE	(5) QTY
			GROUP 08 ELECTRICAL ACCESSORIES	
			FIG 36 SWII CHES	
1			LEAD, ELECTRICAL, MADE FROM, WIRE 14 AWG, P/N 8491796 (72915), TERMINAL, 14-16 STUD, 1/4 IN P/N 31906 (89110) REF DES, IES, HCP, 3J, 4J, ST53V, EK531, EK53P, 1CC16D, MU53X, MU51J, MU51V, MU51A, MU51 R, MU53A	24
2	24446	CR2940VA203B	SWITCH, PUSHBUTTON ASSEMBLY, ENGINE START 1 AND 2	2
3	72915	8295963	SWITCH, WOBBLE STICK ASSEMBLY	1
4			LEAD, ELECTRICAL, MADE FROM, 14 AWG, P/N 8491796 (72915), TERMINAL, 14 AWG, SPADE, P/N A2272 (46522) REF DES, ST53V, EK531, CC535, 1CC61D	11
5	24446	41A30447P1	SWITCH, TOGGLE	2
6	24446	41A205996P4	SWITCH, TOGGLE	2
7	24447	41A212197P1	SWITCH UNIT, HEADLIGHT SET-UP, ROTARY	1
8	96906	MS35206	SCREW #6	4
9	96906	MS27183-6	WASHER, LOCK #6	4
10	24446		PLATE, SWITCH ROTARY	1
11	72915	8237523	RHEOSTAT, GAGE LIGHT DIMMER	1
			END OF FIGURE	



4834-037

Figure 37. Knife Switches

## SECTION II

TM 55-2210-224-24P

(1) ITEM NO.	(2) FSCM	(3) PART NUMBER	(4) DESCRIPTION AND USABLE ON CODE	(5) QTY
			GROUP 08 ELECTRICAL ACCESSORIES	
			FIG 37 KNIFE SWITCHES	
1	96906	MS51967-03	NUT, HEX, 1/4 IN	2
2	96906	MS35338-44	WASHER, LOCK, 1/4 IN	2
3	96906	MS27183-10	WASHER, FLAT	2
4			LEAD, ELECTRICAL, MAKE FROM, WIRE 14 AWG, P/N 8491796 (72915), TERMINAL, 14-16, 1/4 IN STUD P/N 31906 (89110) REF DES, GD, N53, N54	2
5	96906	MS90725-39	SCREW, HEX, 5/16 X 1 3/4 IN	4
6	96906	MS35338-45	WASHER, LOCK, 5/16	4
7	96906	MS27183-12	WASHER, FLAT, 5/16	4
8	24446	41A260616P1	SWITCH, KNIFE, SINGLE, GROUND RELAY CUTOUT, REF DES, GRCO	1
9	96906	MS51967-09	NUT, HEX, 3/4 IN	4
10	96906	MS35338-46	WASHER, LOCK, 3/8 IN	8
11	96906	MS27183-14	WASHER, FLAT, 3/8 IN	8
12			CABLE, 3/0 W/3/8 STUD, REF DES, BY, BX, PO, BN	4
13	96906	MS90725-66	SCREW, HEX, 3/8 X 2 IN	4
14	24446	41 B511393P1	SWITCH, KNIFE, DOUBLE, BATTERY, REF DES,BS	1
			END OF FIGURE	