

4834-151 1

Figure 151. Truck Assembly (Sheet 1 of 2).

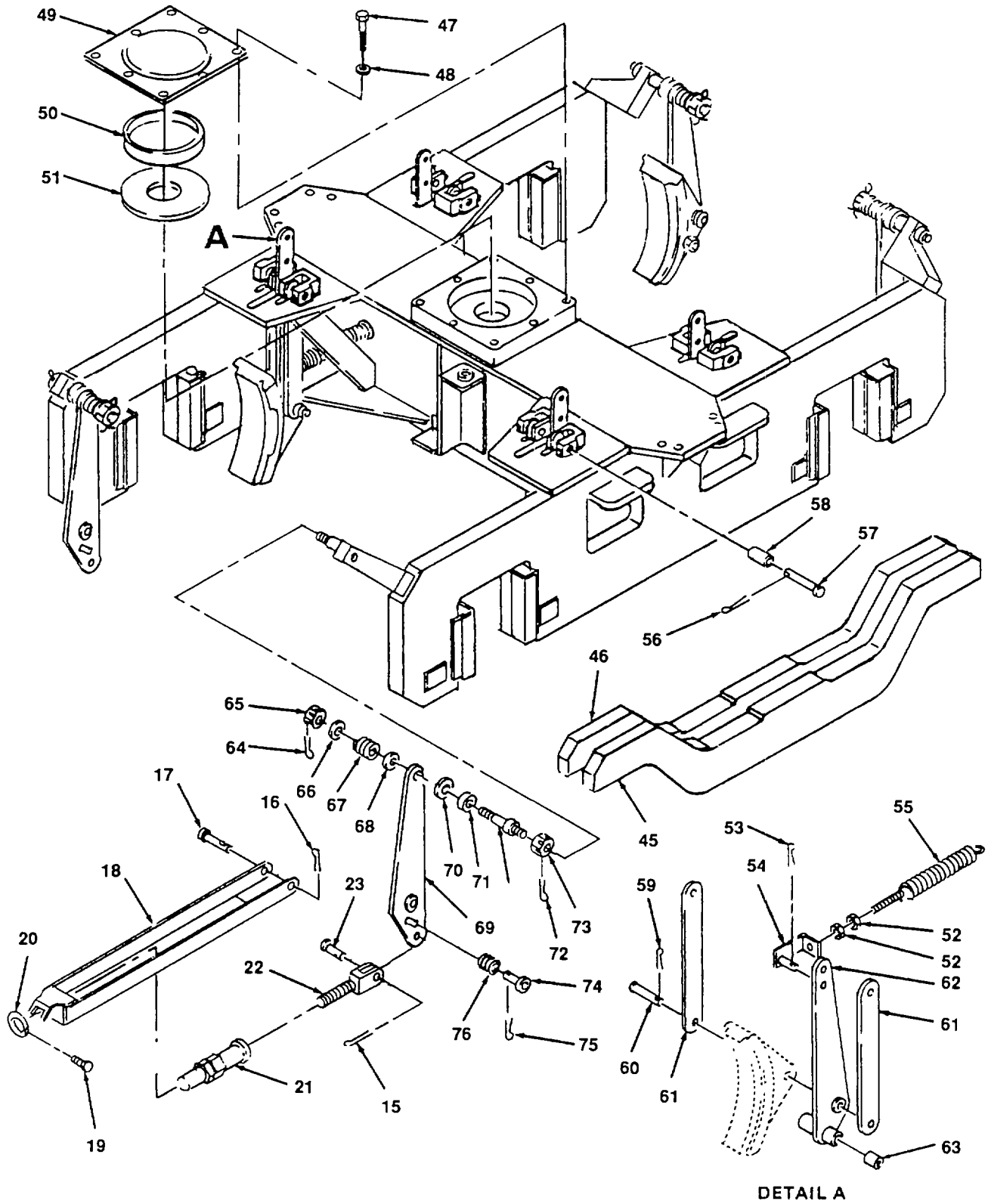


Figure 151. Truck Assembly (Sheet 2 of 2).

SECTION II

TM 55-2210-224-24P

(1) ITEM NO.	(2) FSCM	(3) PART NUMBER	(4) DESCRIPTION AND USABLE ON CODE	(5) QTY
			GROUP 20 TRUCKS AND UNDERFRAME	
			FIG. 151 TRUCK ASSEMBLY	
1			PIN, COTTER	4
2			PIN, HEADED, HANDBRAKE	4
3	96906	MS51967-33	NUT, HEX, 1 1/8-7 NC (NSN 5310-260-1823)	8
4	96906	MS35338-53	WASHER, LOCK, 1 IN	24
5	96906	MS90725	SCREW, HEX-HEAD, 1-8 UNC	24
6			HOOK, SAFETY	2
7			SHIMS, HOOK, SAFETY	6
8	96906	MS90725	SCREW, HEX-HEAD, 7/8-9 UNC	4
9	96906	MS35338-52	WASHER, LOCK, 7/8	4
10	24446	160X67	BASE, SIDE BEARING WITH ROLLER	2
11			PIN, COTTER	4
12			PIN, HEADED, BRAKE CYLINDER	4
13	96906	MS51967-30	NUT, HEX, 1-8 UNC	16
14	24446	4739508P1	PLATE, STAY, JOURNAL BOX	8
15			PIN, COTTER	8
16			PIN, COTTER	8
17	24446	6729364P58	PIN, HEADED, STRAIGHT, BRAKE ROD	8
18	24446	8840843G2	ROD, BRAKE	8
19			SCREW, SET	8
20			COLLAR	8
21	24446	8812915	NUT, COLLAR, BRAKE HANGER	8
22	24446	192X63	SCREW, ADJUSTING, BRAKE ROD ASSEMBLY	8
23	24446	8816764	PIN, CLEVIS, FOUNDATION BRAKE	8
24			NUT, HEX	4
25			WASHER, LOCK	4
26			SCREW, HEX-HEAD	4
27	24446		PLATE, SAFETY	1
28	24446	8825932G2	CLUSTER, HELICAL SPRING (NSN 2240-377-1343)	8
29			PAD, SPRING	8
30	24446	192X96	SEAT, COIL SPRING	8
31	96906	MS51967-15	NUT, HEX, 1/2-13 UNC	4

SECTION II

TM 55-2210-224-24P

(1) ITEM NO.	(2) FSCM	(3) PART NUMBER	(4) DESCRIPTION AND USABLE ON CODE	(5) QTY
			FIG. 151 TRUCK ASSEMBLY (CONT)	
32	96906	MS35338-48	WASHER, LOCK, 1/2	4
33	96906	MS90725	SCREW, HEX-HEAD CAP, 1/2-13 UNC X 7 IN	4
34	24446	4758070	SPRING, HELICAL, INNER	28
35	24446	4758069	SPRING, HELICAL OUTER	28
36			SEAT, SPRING, LOWER	8
37	24446	4758071	SPRING, BOLSTER, HELICAL	8
38			NUT, SPRING, BOLSTER	8
39			SCREW, HEX-HEAD, BOLSTER	8
40	96906	MS90725-207	SCREW, HEX-HEAD, 7/8-9 UNC X 1 1/2 IN	4
41	60038	K82667	PLATE, LOCKING	4
42			BLOCK	4
43			BOX, JOURNAL	4
44	60038	K85073	ADAPTER, FRAME, BEARING SADDLE	4
45			EQUALIZER, OUTER	2
46			EQUALIZER, INNER	2
47	96906	MS90725-03	SCREW, HEX-HEAD, 1/4-20 UNC X 1/2 IN	8
48	96906	MS35338-44	WASHER, LOCK, 1/4	8
49	82047	9947068G1	GUARD, DUST, CENTER PLATE	1
50	24446	8868657G1	RING, WEAR, CENTER PLATE (NSN 2240-795-9847)	1
51	24446	88457S1G1	PLATE, CENTER	1
52			NUT, HEX	16
53			PIN, COTTER	4
54			BRACKET, SPRING	4
55	24446	4764971	SPRING, BRAKE, SPIRAL (NSN 5360-160-8846)	4
56	96906		PIN, COTTER, 1/4 X 3 1/2 IN. (NSN 5315-00-234-1638)	8
57	24446	497A203B1	PIN, CLEVIS	8
58	24446	8825341 P1	BEARING, CLEVIS SLEEVE (NSN 3120-368-5708)	16
59	24446	261836	PIN, COTTER, 3/8 X31 IN (NSN 5315-846-4297)	4
60	53150	2252086	PIN, HEADED, BRAKE LEVER STRAIGHT	4

(1) ITEM NO.	(2) FSCM	(3) PART NUMBER	(4) DESCRIPTION AND USABLE ON CODE	(5) QTY
			FIG. 151 TRUCK ASSEMBLY (CONT)	
61	24446	6757507G8	HANGER, BRAKE	8
62	24446	6757507G9	LEVER, RAILWAY CONNECTION, L H, 39 3/8 IN LONG	1
62	24446	6757507G2	LEVER, RAILWAY CONNECTION, R H, 39-3/8 IN	1
62	24446	6757507G5	LEVER, RAILWAY CONNECTION, R H, 36-3/8 IN LG	1
62	24446	6757507G3	LEVER, RAILWAY CONNECTION, L H, 36-3/8 IN LG	1
63	24446	8825341	BEARING, SLEEVE, BRAKE LEVER	8
64			PIN, COTTER	4
65	24446	39X388	NUT, STUD, SUSPENSION, 1 IN -8 NC	4
66	96906	MS35338-53	WASHER, FLAT	4
67			SPRING, HELICAL, SUSPENSION PIN AND STUD (NSN 5340-377-1354)	4
68			WASHER, SUSPENSION SPRING	4
69	24446	6757507GA	LEVER, RAILWAY CONNECTION, 34-1/6 IN	4
70			WASHER, LEVER, RAILWAY LEVER	4
71			SPACER, SUSPENSION STUD	4
72			PIN, COTTER	4
73			NUT, SLOTTED	4
74	24446	8821053P2	STUD, PLAIN, BRAKE LEVER SUSPENSION	4
75		6719450	PIN, COTTER	4
76	24446	4764903	SPRING, HELICAL, LINK (NSN 5340-128-8812)	4
			END OF FIGURE	