

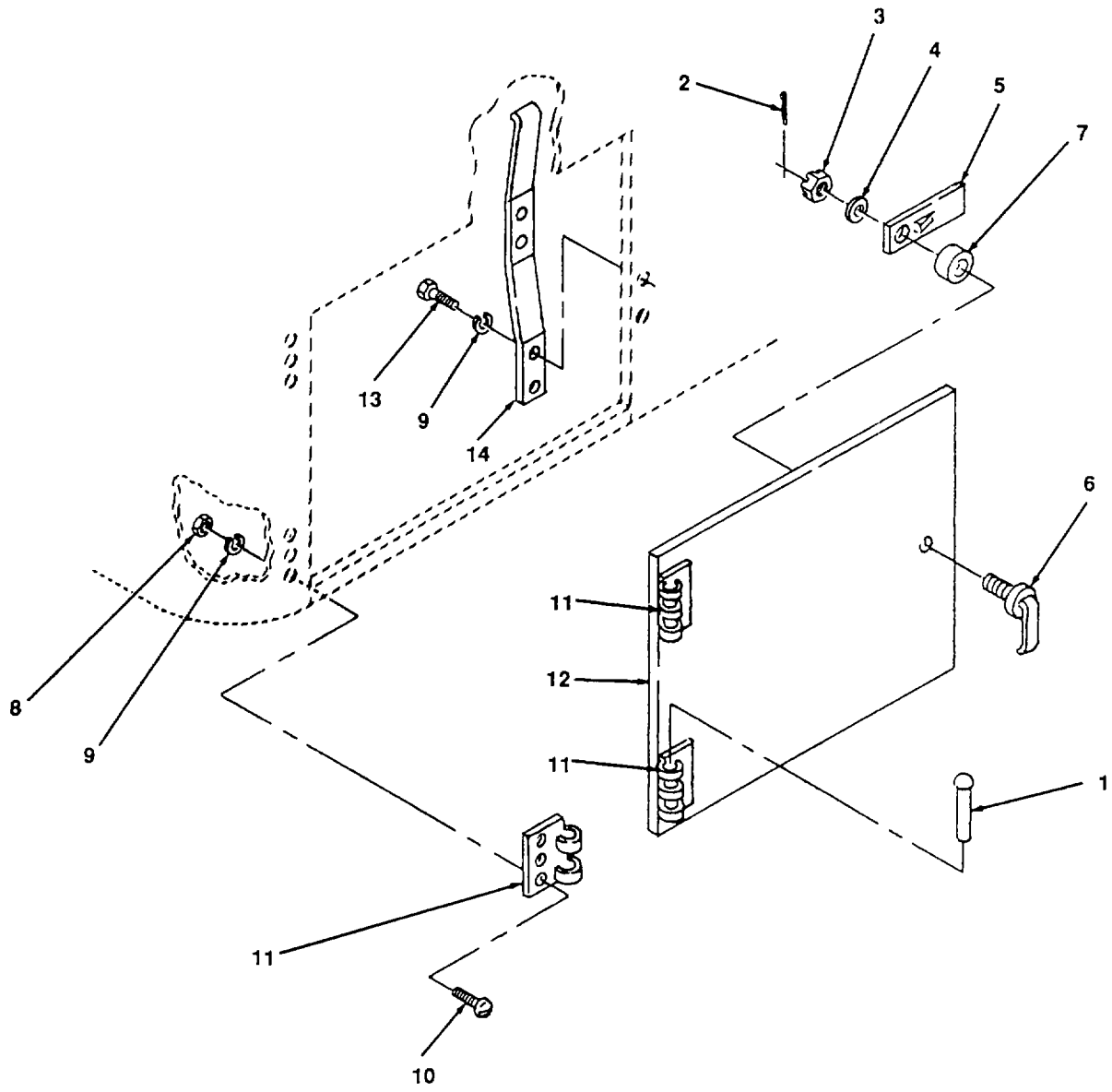
4834 012

Figure 12. Cab Door and Lock.

SECTION II

TM 55-2210-224-24P

(1) ITEM NO.	(2) FSCM	(3) PART NUMBER	(4) DESCRIPTION AND USABLE ON CODE	(5) QTY
			GROUP 02 CAB GROUP	
			FIG. 12 CAB DOOR AND LOCK	
1	96906		PINS, 5/16 X 3 1/2 IN (NSN 5306-00-026-4839)	3
2	34339	PP-C9233	WEATHERSTRIP FILLER	V
3	34339	PP-C9238	WEATHERSTRIP	V
4	81348	DD-GT-451	GLASS	1
5	AU-VE-CO	9006	PIN, SPRING, 1/8 X 3/4 IN.	2
6			HANDLE, INSIDE	1
7			HANDLE, OUTSIDE	1
8	96906	MS51967-09	NUT, FLAT HEAD, 1/4	4
9	96906	MS35338-44	WASHER, LOCK, 114	4
10	96906	MS90725-6	SCREWS, 1/4 X 3/4 (NSN 5305-00-068-0502)	4
11			DOOR LOCK ASSY	1
12	96906		SCREW, MACHINE (NSN 5305-00-068-0502)	4
13			DOOR CATCH	1
14	96906		HINGE HALVE, INSIDE, 3 1/2 X 1 1/4 IN	3
15	96906		HINGE HALVE, OUTSIDE	3
16	96906		SCREWS, CSKH, 1/4-20 X 1 1/2 (NSN 5305-00-958-5248)	18
17	96906		RIVET, 3/16 X 1/4 (NSN 5320-00-493-4101)	8
18	96906		SCREEN, 23 1/2 X 23 IN	1
			END OF FIGURE	



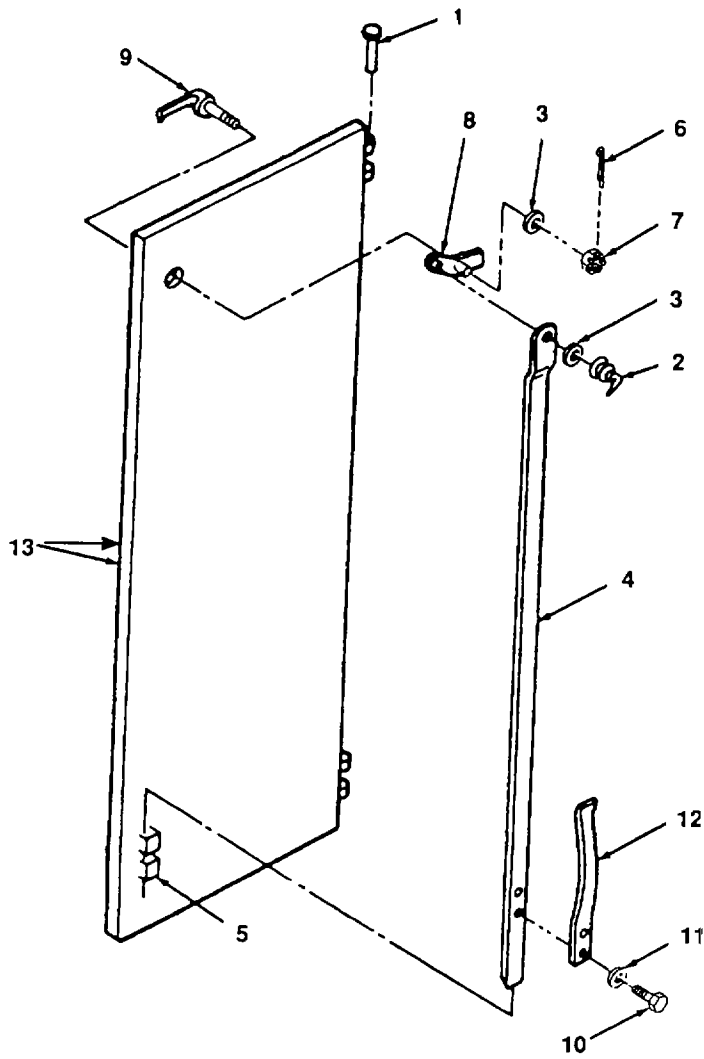
4834 013

Figure 13. Door, Side Compartment.

SECTION II

TM 55-2210-224-24P

(1) ITEM NO.	(2) FSCM	(3) PART NUMBER	(4) DESCRIPTION AND USABLE ON CODE	(5) QTY
			GROUP 02 CAB GROUP	
			FIG. 13 DOOR, SIDE COMPARTMENT	
1	96906		PIN, 5/16 X 3 1/2 IN LONG (NSN 5306-00-026-4839)	2
2	96906		PIN, COTTER, 1/8 X 3/4 (NSN 5310-00-236-8357)	1
3	96906		NUT, CASTLE, 1/2 IN (NSN 5310-00-281-5346)	1
4	96906	MS27183-18	WASHER, FLAT, 1/2 IN (NSN 5310-00-984-8818)	1
5			LATCH	1
		672915 6731285	HANDLE	1
7			SPACER, 1/2 X 1/ 3/4 IN	1
8	96906	MS51967-06	NUT, 5/16 IN	6
9	96906	MS35338-45	WASHER, LOCK, 5/16 IN	8
10	96906	MS90725-34	SCREW, 5/16 X 1 IN (NSN 5305-00-080-3639)	6
11			HINGE, DOOR	2
12			DOOR	1
13	96906	MS90725-325	SCREW, HEX, 5/16	2
14			SPRING	1
			END OF FIGURE	



4834-014

Figure 14. Electrical Equipment Cabinet Door.

SECTION II

TM 55-2210-224-24P

(1) ITEM NO.	(2) FSCM	(3) PART NUMBER	(4) DESCRIPTION AND USABLE ON CODE	(5) QTY
			GROUP 02 CAB GROUP	
			FIG. 14 DOOR, ELECTRICAL EQUIPMENT CABINET	
1			PIN, 1/4 X 3 1/2	2
2			SPRING	1
3	96906	MS27183-18	WASHER, FLAT 1/2 IN	2
4			LATCH BAR, 41 IN LONG	1
5			GUIDE LOOP 5/16 X 1	2
6	96906		COTTER PIN, 1/8 X 3/4 (NSN 5315-00-236-8357)	1
7	96906	MS51967-15	NUT, 1/2 IN (NSN 5310-00-281-5346)	1
8			LATCH LEVER, 4 1/2 IN X 2 1/8 IN	1
9		MS90725-3	DOOR HANDLE	1
10	96906		SCREW, 1/4 IN X 1/2 IN (NSN 5305-00-071-2506)	2
11	96906	MS35338-44	LOCKWASHER, 1/4 IN	2
12			SPRING, 3/8 WIDE X 8 1/2 IN LONG	2
13			DOOR	
			END OF FIGURE	